

Kia Ora (Maori/NZ), Hello (English), Bula (Fijian), Welkom (South African), Huān yīng (Chinese-Mandarin), Ayubowan, Vanakkam (Sri Lankan), Namaste (India), Bem-vindos (Brazil), Marhaba (Arabic), Hallo (Dutch), Choum Reap Sour (Cambodia), Geiá sou (Greek), Mbote, Jambo (Congoese), Konnichiwa (Japanese), Hola (Spanish), Annyeonghaseyo (South Korea) Israel Shalom (Hebrew)

### 2019 BOARD OF TRUSTEES ELECTIONS

This year there is a Board of Trustees election coming up and we wanted to give everyone plenty of opportunity to think about standing for the Board.

The NZSTA links below provides a brief guide as to what it entails:

<http://www.trustee-election.co.nz/>  
[Community Member Guide to the Role of the Board of Trustees](#)

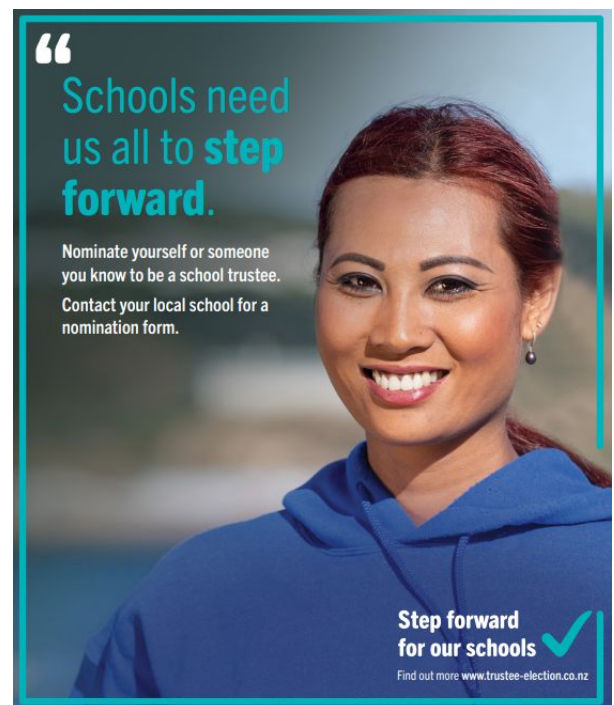
### [Kōrari Programme](#)

**Kōrari** - A programme that provides you with governance training to help you understand the role of school boards of trustees.

**Key Dates for the Te Totara Primary School 2019 Board of Trustees Elections are:**

~~Main Roll Closed – noon Wednesday 8th May~~  
Call for Nominations – by Friday 10<sup>th</sup> May (by post)  
Close Supplementary Roll – noon Wednesday 22nd May  
Nominations Close – noon Friday 24<sup>th</sup> May  
Voting Papers Posted by – Wednesday 29<sup>th</sup> May  
**Election Day (voting closes) – noon Friday 7th June**  
Vote Count – Thursday 13<sup>th</sup> June  
Board takes Office – Friday 14<sup>th</sup> June

**If you would like some further information about what being a Board Member entails, please call Marise Crow (Board Secretary) on (07) 853-0039 ext 858 who will put you in touch with a current BOT Representative.**



### PINK SHIRT DAY - FRIDAY 17TH MAY, 2019

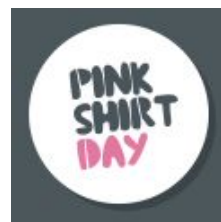
Celebrated annually around the globe, Pink Shirt Day began in Canada in 2007 when two students took a stand against bullying, after a peer was bullied for wearing a pink shirt. In Aotearoa, Pink Shirt Day aims to create schools, workplaces and communities where all people feel safe, valued and respected.

**Our school will be supporting Pink Shirt Day on Friday next week. Students are welcome to come to school wearing muffin clothing (not school uniform) wearing something pink e.g. t-shirt, ribbon or something similar to support Pink Shirt Day.**

Please note: There will be **NO** collection of money for this day.

More information about "Pink Shirt Day" can be found at [www.pinkshirtday.org.nz](http://www.pinkshirtday.org.nz)

Pink Shirt Day is lead by the Mental Health Foundation.



# JUNIOR SCHOOL PRODUCTION

## "Bada Bing it's Spring"

TICKETS ARE ON SALE NOW THROUGH KINDO ONLY

Ticket purchase cut-off date is Wed 29th May @ 3.00pm

*Please note: There is no ticket limit for any of the performances*

**Wednesday 5th June 2019 @ 2.00pm & 6.00pm**

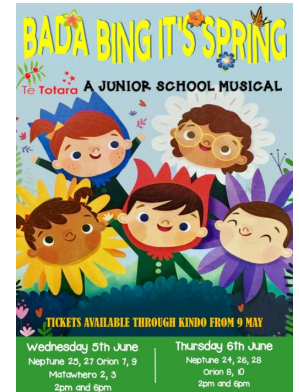
*Both performances by: Neptune 25 & 27 and Orion 7 & 9 and Matawhero 2 & 3*

**Thursday 6th June, 2019 @ 2.00pm & 6.00pm**

*Both performances by: Neptune 24, 26 & 28 and Orion 8 & 10*

**ALL TICKETS ARE \$5.00 EACH**

***Children 3 years old and under are FREE, provided they are sitting on the knee of a paying adult ticket. Otherwise, you must purchase a separate ticket for them.***



**Limited to 300 tickets each performance. Sorry, NO door sales on the night.**

- Payment of tickets is through **KINDO**. Sorry, we will not be accepting any payments through internet banking or through the School Office.
- If you do not have access to a computer, you are welcome to use the school iPad which is available in the School Office. If you do not have an email address, please contact Marise Crow 07 853-0039 ext. 858.
- **Tickets are non-refundable nor transferable so please ensure you are ordering the correct day/time.**
- We acknowledge that some families may have children performing on both days and may have to purchase tickets for each of the days. Unfortunately, we cannot offer any solution to this as the money from ticket sales goes towards the costumes, lighting, sound, backdrops etc.
- Only 300 tickets are available for each performance so don't miss out!. NO extra seating or standing room will be allowed due to Health & Safety Regulations.
- The School Office will regularly check sales through KINDO and will send colour coded ticket/s home with the oldest child in each family within a few days of purchase:  
*Wednesday 5th June, 2019 (2.00pm/Yellow ticket and 6.00pm/Orange ticket)*  
*Thursday 6th June, 2019 (2.00pm/Green ticket and 6.00pm/Blue ticket)*
- Please remember to bring your ticket to the performance; this will confirm you have purchased a seat. Sorry, no ticket - no entry – there will be NO DOOR SALES. There will be no general reserved seating available for parents/families.
- **Doors open for Matinee Performances at 1.30pm / Evening Performances doors open at 5.30pm**
- The number on your ticket is NOT your seat number, seating is on a first-come-first-served basis.
- There will be an area allocated for wheelchair access and seating. If you require this service, please make sure you indicate this when purchasing your tickets through KINDO.
- **All Year 1 & 2 students are required to attend each of their own team performances. Students performing on the day/evening do not require a ticket.**
- **For evening performances the Lead Characters (Narrators & Queen) are required to meet in the Staffroom at 5.30pm.**
- All other evening performance students are to arrive at **5.30pm** and go directly to their allocated classrooms to meet their teacher where they will be supervised.
- All our students will have an opportunity to watch a dress rehearsal of the Junior School Production during school time so please do not buy your child who attends Te Totara a lunchtime performance ticket.

## LATE ARRIVALS (AFTER 8.55AM)

Unfortunately, this week we have seen a big increase of students arriving late to school after the bell has rung at 8.55am, along with this increase we have also noticed we are not being advised of your child's absence if they are away from school for any reason.

Your help with this matter would be much appreciated.

*Have you ever arrived at a meeting late, everyone is settled in their chair, the presenter has welcomed them and is now outlining what the day has in store..... and as you walk in they all turn and look at you?*

That is what it can be like for your child when they arrive late at school and their class is all settled. So please, we ask parents to ensure their children arrive at school with at least five minutes to spare, for them to organise themselves by hanging up their school bag and sorting their book bag independently.

We understand there may be rare occasions where your child arrives late at school (after 8.55am) and require families to report to the School Office for the child to be issued a "Late Card" prior to heading to their learning areas. We appreciate your effort in ensuring your child/ren arrive at school in good time before the first bell at 8.55am.



## ABSENCES

If your child will be away from school then please let us know by either:

- Phoning the school on **(07) 853-0039**
- School App
- Texting the School Office on 027 207-4466 with name, details and reason for absence. Please note that we do not send a reply to text messages.

We would appreciate any absence messages **before 9.00am.**



## 2019 FEES AVAILABLE TO PAY VIA KINDO NOW

This online system allows you to pay for our school's fees (Mathletics, Aquatics, Voluntary School Donation, Lost Library Book Fees etc) and is also the **ONLY** way to register/pay for your child for sports teams.

**kindo.**  
The online one stop school shop

**Year 5&6 only Tough Guy & Gal Registrations close tomorrow, Friday 10th May @ 3.00pm**

**Junior Production - "Bada Bing it's Spring" Ticket purchase cut-off is 3.00pm Wednesday 29th May, 2019**

### Questions?

Register for Kindo using our App or through our School Website (click on the link) [www.tetotara.school.nz](http://www.tetotara.school.nz) then select the "Fees & Donations" tab.

If you need help, please pop in and see us at the School Office OR give us a call on (07) 853-0039 OR call the **Kindo Helpdesk on 0508 454636 (toll free)**

**If access is denied, it is most likely that our school does not have your current email address recorded on your child's file. Please do not hesitate to contact the School Office on (07) 853-0039 to amend.**



## SCHOLASTIC BOOK ORDERS

Scholastic Book orders are due by tomorrow, **Friday 10th May, 2019 @ 9.15am**, to the School Office. Sorry **NO** late orders will be accepted.

**REMEMBER.... When completing the order form please fill in all the details i.e. name, room number, item number and title of the book.**

**A quick easy way to order and pay now, is to order and pay online with the book club loop.**

## SCHOOL ASSEMBLY

This week's assembly will be held on **Friday 10th May, 2019 in the Matariki Hall at 2.00pm.**

This week our children from **Orion and Milky Way** will attend assembly.

**This week our Milky Way 22 children will be sharing.**

## WELCOME TO OUR NEW ASSISTANT CARETAKER

A very warm Te Totara School welcome to Terry Kawiti who is our new Assistant Caretaker. He has a wealth of experience in the area of building and property maintenance. Terry started with us last week and we are very much enjoying working with him. Ian, our Caretaker is certainly valuing Terry's support and I would like to thank Ian for his marvellous efforts over the past 6 weeks since Bernie left us.



## FIRST CREDIT UNION AUTUMN 2019 NEWSLETTER

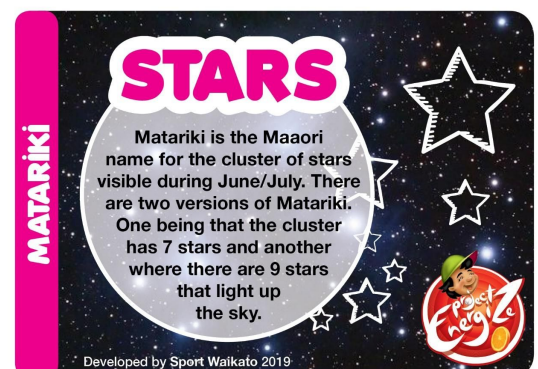
Check out First Credit Unions Autumn Newsletter online on our school website, quick links, newsletters and notices. There is a chance to win \$50.00! Complete the word find.

*First Credit Union provides a school banking service to all pupils at Te Totara Primary School. Getting started is easy - Just pick up an application pack from the School Office, fill in the application form and return it to the green "First Credit Green Drop-box" in the school office. If your children are already doing school banking, remember that the school banking is collected on **Wednesdays at 9.00am each week!***

## DATES COMING UP

<b>Fri 17 May</b>	<b>Pink Shirt Day - Muffi Day (NO gold coin required)</b>
<b>Mon 3 June</b>	<b>Queens Birthday, Public Holiday</b>
<b>Wed 5 June</b>	<b>Junior School Production - "Bada Bing It's Spring"</b> <i>2.00pm Matinee &amp; 6.00pm Evening Performances</i> <b>Neptune 25 &amp; 27 and Orion 7 &amp; 9 and Matawhero 2 &amp; 3</b>
<b>Thurs 6 June</b>	<b>Junior School Production - "Bada Bing It's Spring"</b> <i>2.00pm Matinee &amp; 6.00pm Evening Performances</i> <b>Neptune 24, 26 &amp; 28 and Orion 8 &amp; 10</b>
<b>Fri 31 May</b>	<b>Arbor Day - Waiwhakareke Natural Heritage Park from 10.00am - 3.00pm</b>

ngā mihi,  
**Anne Fraser**  
Principal



# TE TOTARA PTA NEWS

EMAIL: [tetotara.pta@gmail.com](mailto:tetotara.pta@gmail.com) [www.facebook.com/TTPTA](http://www.facebook.com/TTPTA)

## ENTERTAINMENT BOOKS

Want to save big on fine dining, cafes, events, attractions and local businesses? You'll not find a better deal than this!

The Entertainment Book offer great value discounts to a huge variety of businesses and events all throughout the region – you can easily recoup your financial investment within 3-4 uses of the wide and varied discount vouchers, Valid until June 2020.

As a special incentive, we will be having a special draw to win one of two prizes – receive one entry for each book sold. Tell your friends and family today!

Entertainment Books were handed out to students on:  
**Tuesday 30th April, 2019 (1st week of Term 2)**

However, if you would like to have your book sooner or would like a digital edition then click on the link below:

<https://www.entertainmentbook.co.nz/orderbooks/15502m5>



### Why buy digital?

- no more leaving your book at home as its on your phone.
- you can share your book between 4 phones - let the kids have the app too :)
- you get new coupons throughout the year
- you can use the 'near me' feature to check out everything close to you

## PTA EVENTS COMING UP

**Term 2** **SUPERSTAR SPELL-A-THON!** Keep a look out for details

Please 'like' our Facebook page to ensure you keep in the news loop:

[www.facebook.com/TTPTA](http://www.facebook.com/TTPTA)

## COMMUNITY NOTICES:

We are often asked to put Community Notices in our newsletter. Due to the large number of requests, we now have a "Community Notices" section on the notice board in the School Office, where you will find more information on the notices below. **Please note that this does not necessarily imply School endorsement of these notices.**

### LOST PRESCRIPTION GLASSES - REWARD OFFERED

My son lost his prescription glasses at school last week. They are black framed with orange arms that have the brand 'Nano' on the side of them. They have more than likely been lost around the back field area or flaxes.

As children seem to be very good 'treasure hunters' I was hoping you could ask your child(ren) to look out for them and if they find them to contact me please - Teena Bell (021)369948. *I am willing to offer a \$50 reward to the child who finds them.*



## ADAM THOMAS FOOTBALL AT TE TOTARA PRIMARY SCHOOL - TERM 2, 2019

Registrations are now open for our Term 2 after School Football Programme

**Starts Wednesday 8th May, 2019.**

Limited spaces available, register early to secure your place.

To register please go to our website [www.adamthomasfootball.com](http://www.adamthomasfootball.com) and find your school and complete the registration form. Feel free to contact me if you would like more information.



ADAM THOMAS FOOTBALL

Olympic Football Coaching Term 2

**SCHOOL**  
Te Totara Primary

**DATE**  
Wednesday afternoons

**TIME**  
3.15pm - 4:30pm

**FREE**

**CYBERSAFETY**

**PARENT INFORMATION EVENING**

**THURSDAY 16 MAY - 7PM**

**HILLCREST HIGH SCHOOL AUDITORIUM**

netsafe

NEW ZEALAND POLICE

NEW ZEALAND Youth AWARDS

Know an outstanding young person?

Nominate them now for the New Zealand Youth Awards 2019!

Visit [www.myd.govt.nz](http://www.myd.govt.nz) to learn more

SPLICE magic ANZ PREMIERSHIP

**V MYSTICS**

Sunday 12 May | 4pm

Claudelands Arena, Hamilton

Secure your seats TICKETEK

#HobbitonMagic

Hobbiton™ Movie Set Cup 2019

Splice Construction Magic vs Northern Mystics

Get your tickets now at [www.ticketek.co.nz](http://www.ticketek.co.nz)

Be there to experience some middle earth magic, and too see legend Casey Kopua in action for the Magic on home turf, one last time.

Doors open at 1.30pm for the Beko Netball League Curtain Raiser between WBOP and the Northern Marvels.



# MUSIC LESSONS at SCHOOL

**Guitar, ukulele, voice and piano lessons all available at Te Totara!**



## Would your child like to learn to play a musical instrument?

Enrol your child in the music lessons they have always wanted to do.

MusicHub has guitar, ukulele, voice, and keyboard lessons available at Te Totara School.

Did you know students who learn a musical instrument get better marks in other subjects? And that music helps with brain development?

Research has shown "learning a musical instrument is associated with better cognitive skills and school grades as well as higher conscientiousness, openness, and ambition."

Sign your child up to learn a musical instrument and they'll learn skills for life, and not just musical ones. They'll acquire increased coordination, memory and confidence, improved concentration and self-expression, and many other valuable traits.

## CARL WATKINS - MUSIQHUB MANAGER

Carl is a musician with over 20 years experience in the music industry, as a writer, performer and recording artist. He has a Master of Music and has been tutoring for MusicHub for 5 years, having taken over his own franchise last year. Carl is a trained vocalist, who taught himself to play guitar, ukulele and piano. He writes for orchestra and rock ensembles and is an avid actor. Helping Carl at Te Totara is Mary Smith, who has played all over the world, including in London and New York. She's looking forward to tutoring piano, guitar and ukulele in Term 2.

Lessons are 1/2 an hour long. Keyboards are provided at lesson time but students are required to have their own keyboard or piano for home practice. Guitar and ukulele students are required to have their own instruments.

Costs (GST inclusive). Small Group Tuition \$18.00 per lesson on a term-by-term basis. Individual lessons \$31.00 per lesson on a term-by-term basis (limited availability).

### Who we are . . .

- MusicHub is a national network of independent music tutors who are passionate about supporting children's development and learning through music tuition.
- We believe learning music develops life skills in children – confidence, discipline, coordination, self-esteem, teamwork, creativity and self-expression.
- We have awesome teachers who will share their passion for music with your child.

To register or for more information, contact us via:

Phone: 027 388 9558

Email: [carl.watkins@musiqhub.co.nz](mailto:carl.watkins@musiqhub.co.nz)

Or via our website [www.musiqhub.co.nz](http://www.musiqhub.co.nz)

**MUSIQHUB**  
PLAY SMART