

Kia Ora (Maori/NZ), Hello (English), Bula (Fijian), Welkom (South African), Huān yíng (Chinese-Mandarin), Ayubowan, Vanakkam (Sri Lankan), Namaste (India), Bem-vindos (Brazil), Marhaba (Arabic), Hallo (Dutch), Choum Reap Sour (Cambodia), Geiá sou (Greek), Mbote, Jambo (Congolese), Konnichiwa (Japanese), Hola (Spanish), Annyeonghaseyo (South Korea) Israel Shalom (Hebrew)

MESSAGE TO TE TOTARA PARENTS FROM COMMUNITY CONSTABLES REGARDING CORRECT CAR SEAT PROTOCOL

During the first week of school we had a number of Police vehicles in our area observing driver behaviour to ensure correct speeds and driver behaviours are in place. We were contacted by them and asked to do some parent education around aspects of correct placement of children in cars. This was particularly around the number of 'mid sized' children they saw sitting in the front seat which is of concern due to potential serious injury from airbags in an accident situation. The following information has been provided to us for our newsletter. Please take time to read it and think about whether this applies to your children. Thank you.

Child Seat Age Guidelines

If you're transporting children in a vehicle on our roads you need to know how to safely restrain them so that they're protected in the event of a crash.

Your responsibilities as the driver (under law)

As the driver, you must make sure that any child **under 7 years** of age is properly restrained by an approved child restraint that is appropriate for the age and size of the child. They must not travel in the vehicle if you can't put them in an approved child restraint. The vehicle's safety belt on its own is not an approved child restraint.

Approved child restraints include:

- *Infant restraint: birth to at least 1 year of age (also called infant capsules)*
- *Convertible (baby to child) restraint: birth to approximately 4 to 5 years of age*
- *Front-facing child restraint: about 1 year to approximately 4 years of age*
- *Booster seat: from approximately 4 to 10 years of age*
- *Child safety harness: from approximately 4 to 10 years*

If the child is aged **7 years** you must use an approved child restraint if one is available in the vehicle and if it is appropriate for the child's age and size. Otherwise they must use a safety belt if one is available. If no child restraints or safety belts are available, they must travel in the back seat.

Children aged **8 to 14 years** must use a safety belt if one is available. Otherwise, they must travel in the back seat. **Note:** A child under 15 years old may sit beside the driver only if they are restrained by a child restraint or safety belt (whichever is appropriate for their age and size). However, they are always safer in the back seat than in the front. The general guideline is that children 12 and under are safest in the back seat, although this doesn't take into account height and weight (i.e. a 12-year old could be taller than a fully grown adult). The back seat is the safest place for any passenger, regardless of age.

As your child grows you will need to change your child seat to one of an appropriate size.

When can a child wear an adult safety belt?

In general, a child is considered adult size at around 148cm tall. NZTA's guidelines are:

- *The child is able to sit upright against the back of the seat with their knees comfortably bent over the edge of the seat cushion*
- *The diagonal part of the safety belt crosses the child's shoulder and breastbone, not the neck*
- *The lap part of the safety belt crosses low down on the child's lap, touching their thighs, and not up around the stomach*

For further information please see the [NZ Transport Agency](http://www.nzta.govt.nz) website or NZTA Child restraints [factsheet](#)

WEETBIX TRYATHLON - SUNDAY 16TH FEBRUARY, 2020

WELL DONE to all our students who have already registered to participate in the Weetbix TRYathlon!

Click the link for further information [Weetbix Tryathlon Hamilton](#). Entries have now closed.



You are all STARS for signing up to give it a go and we are looking forward to watching you compete, supporting you at the event, and hearing about your exciting day! Good luck! Do your best and have fun :)

MEET THE TEACHER EVENING - WEDNESDAY 19TH FEBRUARY, 2020 (WEEK 3)

We are very keen to continue to have close links between home and school, so we have arranged for a Meet the Teacher session for families, a great way to stay really connected with the school.

5.30pm - 6.00pm Matawhero, Orion & Neptune families meet with their Teacher

6.00pm - 6.30pm Ra & Earth families meet with their Teacher

6.30pm - 7.00pm Marama & Milky Way families meet with their Teacher

The different timings above allows those of you, with children in different year levels of the school, to get to each of the presentations relating to your children.

Please Note: Students are not required to attend "Meet the Teacher Evening" however, they are most welcome to play on the playground while they wait for you.

We have an optional 'Bring Your Own Device' procedure at school for Year 3-6 students only. We have very clear protocols around this which need to be adhered to. The Team Leaders and Teachers will outline these to families in this area of the school as part of their Meet the Teacher presentations. We will have the BYO iPad Agreement Forms available at this time. Check our website as well around this.

<http://www.tetotara.school.nz/77/pages/87-bring-your-own-device-faqs>

TO HELP WITH LEARNING

MATHSEEDS (Years 1&2) / MATHLETICS (Years 3-6)

We have joined the whole school for 2020 at a much discounted price of: **\$20.00 per student for 2020** (usual rate is \$99.00 per year, per student)



This year we have registered all our Year 1&2 students to Mathseeds, similar to Mathletics but tailored towards this age group. We are sure your children will love it!

Teachers are encouraging their students with these interactive computer programmes as it helps with important maths skills; you will also find teachers using it in their daily maths programmes.

We have been so impressed with how motivated the children have been producing excellent results. Shortly, we will be invoicing families \$20.00 per student to join Mathletics/Mathseeds for 2020. Please pay this fee by KINDO.

Year 1&2 students will be issued their User Login ID & Passwords shortly by their classroom teacher. The **Mathseeds** site is <https://mathseeds.co.nz/>

Years 3-6 students will be issued their User Login ID & Passwords shortly by their classroom teacher. The **Mathletics** site is <http://www.mathletics.co.nz>

If you have any queries on how Mathletics or Mathseeds works, please don't hesitate to contact your child's classroom teacher.

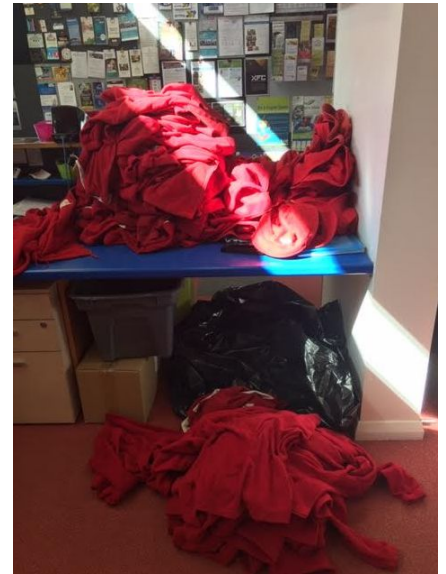
**** LOST PROPERTY VOLUNTEER HELP NEEDED ****

This huge pile of Lost Property was left over from 2019 and our School Office staff have spent several hours trying to find their owners at what is already a very busy time of the year.

Over the course of 2020 we would really appreciate volunteer help to sort out our Lost Property Box. If you can spare approx. 1 hour of your time once a fortnight, we would love to see you! It would entail checking the names on uniform items and returning them to their rightful owners.

If you have any questions or you would like to help out, please contact Marise on (07) 853-0039 ext. 858

Please, please remember to name your school uniform items. We will endeavour to return named school uniform items of clothing to their rightful owner, however any unnamed school uniform will be given to the School Office and sold at the end of term, with the proceeds returned to the school.



Volunteers



NEW SHADE SAILS - THANK YOU TO OUR WONDERFUL PTA

Last weekend our shade sails over the playground behind the hall were installed. They are very colourful and look as if they just 'float over the equipment.' Thank you so much to our PTA for providing the funding to complete this project to keep our active children sun safe on this playground.



COVERED COURT - NAMING SIGNAGE IS UP !!

We are delighted to have had installed the signage by the entrance to the covered court which announces the name of this wonderful facility. Our Student Council ran a competition last year to name the court. We had a number of great options put forward which the whole school voted on. The successful name is pictured here.



KINDO - WORK & INCOME PAYMENTS

KINDO is now registered as a supplier with Work and Income.

What to do? Add items to your cart, click "Top up and place order" and choose 'internet banking'. You will see instructions, including the reference details to use when making your payment. Give your Kindo member number (6 digit reference) details and the Kindo Supplier number **CUR001872643** to your Case Manager.

As soon as the funds are received your order will be placed and you will receive an Order Confirmation.

kindo.
The online one stop school shop

2020 FEES AVAILABLE TO PAY VIA KINDO NOW

This online system allows you to pay for our school's fees (Mathletics, Aquatics, Voluntary School Donation, Lost Library Book Fees etc) and is also the **ONLY** way to register/pay for your child for sports teams.

Please make school payments through your myKindo account. You can pay via American Express, Visa, Mastercard, UnionPay (fees apply), POLi or bank transfer (no fees). Add regular top-ups if you'd like, then allocate to payments when you're ready, or just pay as you go.



2020 School Camp - Year 5&6 Students only
\$180.00 Full Payment & Medical Questions OR

4th \$45.00 Installment - Due by 6th March, 2020

Questions?

Register for Kindo using our App or through our School Website (click on the link)

www.tetotara.school.nz then select the "Fees & Donations" tab.

If you need help, please pop in and see us at the School Office OR give us a call on (07) 853-0039 OR call the **Kindo Helpdesk on 0508 454636 (toll free)**

If access is denied, it is most likely that our school does not have your current email address recorded on your child's file. Please do not hesitate to contact the School Office on (07) 853-0039 to amend.



SCHOOL LUNCH SERVICE

We are excited to continue our school lunch service at school. Our supplier is "Lunch Orders" who are based in Hamilton.

A message from LunchOrders:

It's time to update your child's details.

Heya LunchOrders whānau! 2020 is going to be a year where the team in the LunchOrders kitchen will continue to innovate and experiment to bring you the healthiest, and most attractive school lunches! **Just a quick reminder to update your child's classroom number for 2020 so their yummy lunch can be sent to the right place! To update go to "My Account" and then select "Family Details".**

HOW IT WORKS

- Visit us online at www.lunchorders.co.nz
- Sign up for a free account and select your school
- Top up your account using a credit card or direct credit
- Place your order and select delivery date
- Sit back and relax while your order is freshly made and delivered to your school

LunchOrders delivers to Te Totara Primary on **MONDAY - FRIDAY** at 12.15PM.

Delicious & nutritious meals delivered straight to the classroom

www.lunchorders.co.nz

SCHOOL DONATION

We certainly appreciate the fantastic support we are receiving for the school voluntary donation, it is appreciated and the funding will be used for resources for the children.

If you wish to pay your voluntary School Donation, we are happy to accept payment through KINDO. The Board of Trustees has set payment at:

\$120.00 for the first family member

\$ 60.00 for each subsequent child

Please check with the School Office as the voluntary School Donation is adjusted during the year depending on which term your child/ren started school.

A GST receipt can be issued if requested. A % of your donation may be claimed as a tax rebate using a "Rebate Claim Form" – please refer to Inland Revenue for further details.



CHANGE OF DETAILS/ADDRESS

Just a little reminder that if you have changed any of your details i.e. phone, address, email etc; to please advise the School Office so we can update your records accordingly. We encourage our families to check your contact details are correct through the parent portal at www.atschool.co.nz using the User ID and Passwords that were provided with your child/ren previous Learning Plan given out in December 2018.

CLASSROOM SEESAW

This is a wonderful way for us to be able to communicate with whanau and share our learning. If you are not connected to your child's profile, please contact your classroom teacher for log in



2020 TERM DATES

Term 1 Mon 3 Feb - Thu 9 April (10 weeks)

Term 2 Tue 28 April - Fri 3 July (10 weeks)

Term 3 Mon 20 July - Fri 25 Sept (10 weeks)

Term 4 Mon 12 Oct – Wed 16 Dec (10 weeks)

Holiday - Thu 6 Feb Waitangi Day

*Holiday - Mon 27 Apr (ANZAC Day) &
- Mon 1 June Queen's Birthday*

Teacher Only Day - Friday 29 May

Holiday - Mon 31 Aug School Mid-Term break

Teacher Only Day - Friday 23 October

Holiday - Mon 26 October Labour Day

HEAT PLAN

With the very hot weather we have introduced a Heat Plan at school. Usually our children go outside during the breaks to play with friends and enjoy the benefits of being active. We recognise that with the very hot weather this can pose some risks, especially around dehydration and heat related concerns. So on very hot days we will be having an indoor option for the children to use at break times, typically anything over 25 degrees in the forecast will trigger the Heat Plan.

We are fortunate that all our inside areas (*apart from the Matariki Hall*) are air conditioned so it allows for optimum learning and teaching conditions.

FINDING OUT WHAT IS HAPPENING

We have many ways of keeping up-to-date regarding events that are happening at school:

Online school calendar: [Online School Calendar](#)

School App: [Download the School App](#)

School Website: [Te Totara Website](#) - *this has the option to translate the newsletter into other languages*

Weekly notices: [Weekly Notices](#)

Facebook Page:

<https://www.facebook.com/TeTotaraPrimarySchool230374533681330/>

We have a great team at school who keep these all updated in real time.



SCHOOL UNIFORM - UPDATE FROM DIRECT GROUP

We are delighted with the large numbers of students who look really great by wearing their uniform in the correct manner.

Direct Group have advised the red polo stock has run low and they are expecting a new shipment within the next couple of weeks.



TE TOTARA BUCKET SUN HATS - COMPULSORY TERM 1, 2020

From the beginning of Term 1, 2020 **ALL** children will need to wear their Te Totara Primary School Red Bucket Hat when outside. These can be purchased through Direct Group, 6 Latham Court, Hamilton (off Kahikatea Drive) Phone (07) 847-6664.

NAMING OF SCHOOL UNIFORM

Please, please, please can you make sure all items of school uniform are clearly named. It is not good enough to assume that your child will know that something belongs to them "because it has a black dot on the tag". If an item of clothing is found out on the fields it can not be returned unless it is named.

SCHOLASTIC BOOK ORDERS

Scholastic Book orders are due by **Friday 21st February, 2020 @ 9.15am**, to the School Office. Sorry **NO** late orders will be accepted.

REMEMBER.... When completing the order form please fill in all the details i.e. name, room number, item number and title of the book.

A quick easy way to order and pay now, is to order and pay online with the book club loop.

FIRST CREDIT UNION SUMMER 2020 NEWSLETTER

Check out First Credit Unions Summer Newsletter online on our school website, quick links, newsletters and notices. There is a chance to win \$50.00! Complete the maze and win!

First Credit Union provides a school banking service to all pupils at Te Totara Primary School. Getting started is easy - just pick up an application pack from the School Office, fill in the application form and return it to the green "First Credit Green Drop-box" in the School Office.

If your children are already doing school banking, remember that the school banking is collected on Wednesdays at 9.00am each week!



SCHOOL ASSEMBLY

This week's assembly will be held on **Friday 14th February, 2020 in the Matariki Hall at 2.00pm**. This week our children from Neptune and Ra will attend assembly.

DATES COMING UP

Wed 12 Feb - Fri 14 Feb

Wed 19 Feb

Wed 26 Feb

Thurs 27 Feb

Fri 28 Feb

Fri 13 Mar

Wed 18 Mar

Thurs 26 Mar

Thurs 9 Apr

Y5&6 School Camp for Milky Way Team - Enjoy the adventure

Meet the Teacher Evening (see above information for times)

PTA Informal Mtg re: Twilight Fundraiser (venue TBA)

BOT Meeting @ 6.30pm

PTA Raffle items to school

Twilight Event (PTA)

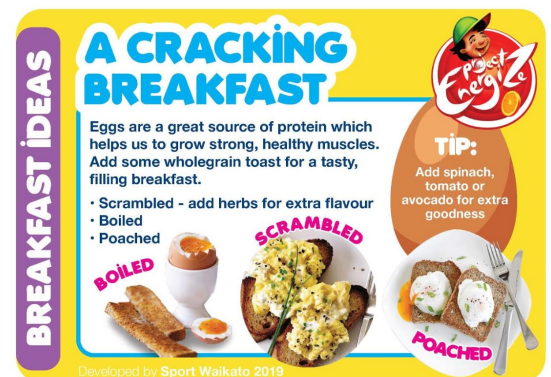
PTA Meeting @ 7.30pm

BOT Meeting @ 6.30pm

End of Term 1, 2020

@ 3.00pm

Ngā mihi,
Anne Fraser
Principal



TE TOTARA PTA NEWS

EMAIL: pta@tetotara.school.nz www.facebook.com/TTPTA

Please 'like' our Facebook page to ensure you keep in the news loop:

www.facebook.com/TTPTA



PLAYGROUND COVER

The PTA is pleased to see the new playground cover looking fabulous! We hope the children are enjoying the shade.

FAMILY FUN TWILIGHT FUNDRAISER FRIDAY 13TH MARCH, 2020

Fundraising Family Fun Night for Te Totara PTA will be held on Friday 13th March at school.

PRE-PURCHASE TICKETS HERE:

tetotarapta.eventbrite.co.nz

Just \$25.00 per Team of 4.

Race times from 5.30pm

More information below.

RAFFLE ITEMS

For our event there will be raffles for additional fundraising. We would like to ask for donations of non-perishable items.

The PTA will be collecting items on Friday 28th February before school.

VOLUNTEERS NEEDED ON RACE DAY!

To make this fundraising event a success, **the PTA needs you!** Each POD will have a sign-up sheet for Marshall stations along the course. This event is to fundraise for our school and to create a fun, memorable event for our children and community. With your help, let's make this evening one to remember.

FIRST AIDERS

Thank you to those who have offered to be part of our First Aid team. We are still needing to fill the 6.00-7.00pm slot – if you are First Aid certified and are happy to volunteer your time, please contact the PTA. pta@tetotara.school.nz www.facebook.com/TTPTA

ABOUT THE EVENT

A fun night for all the family. Enter as a Team of 4 (*min 1 adult per team*). Completing challenges, both physical and cryptic through a course set through the school grounds.

One of our Challenges will include a **FIRE ENGINE** and some water!

Sausage Sizzle, Pizza and Coffee Cart (cash only)... Spot prizes... LOTS of raffles... Music and more! Come for the evening... **Open from 4.30pm**

Thank you to our sponsors of our Family Twilight Event, so far we have onboard:

New World Rototuna
Smith and Mackenzie

Numberworks Rototuna
Good Neighbour
NZ Home Loans Rototuna
Jitterbugs Dance/JitterFit

Dominos Rototuna

Lonestar Rototuna

First Place Fitness Te Rapa

We are looking for more sponsors of spot prizes on the night, contact the PTA if you are able to help sponsor the event.



FINANCIAL ACCOUNTS

PTA End of Year financial accounts are available on the school website:

<https://www.tetotara.school.nz/4/pages/15-pta>

UPCOMING PTA MEETING DATES

Wed 26 Feb - Twilight Event Fundraiser Informal Meeting (Venue TBA)

Wed 18 March PTA Meeting @ 7.30pm

Wed 6th May PTA Meeting @ 7.30pm

Your PTA committee: *Fiona, Moshe, Rae, Kerry, Shelley*

COMMUNITY NOTICES:

We are often asked to put Community Notices in our newsletter. Due to the large number of requests, we now have a "Community Notices" section on the notice board in the School Office, where you will find more information on the notices below. **Please note that this does not necessarily imply School endorsement of these notices.**



KIDS SPEAK OUT!

No Confidence – School speeches – Bullies - a NIGHTMARE?
AFTER SCHOOL CLASSES: Kids gain real life skills & have fun!
RING Roz 027 248 2888 www.speak4success.co.nz



PIANO & TRUMPET
TUITION FOR
ADULTS AND KIDS

📞 Cameron 022 029 5040

✉ contact@sgms.co.nz

🌐 www.sgms.co.nz

Want to learn to play the GUITAR or UKULELE?
DRUMS? Or play PIANO?
Here at Te Totara you can, with the help of...

MUSIQHUB
PLAY SMART

Just contact Carl for more info...

carl.watkins@musiqhub.co.nz

027 388 9558

WAIKATO SOCIETY OF ARTS

Follow us on: Facebook:

<http://www.facebook.com/waikatosocietyofarts>

Instagram: <http://www.instagram.com/artwaikato>

Email, artschool@wsa.org.nz

Waikato Society of Arts Inc.

120 Victoria Street, Hamilton W: 07 839 4481

www.wsa.org.nz

HAMILTON CITY NETBALL CENTRE

WAIKATO TAINUI
HONGI HUI-ANGATA

MENS NETBALL
AGES 12-16; 17-21
ALL ABILITIES

HAVE A GO!
HAMILTON CITY NETBALL CENTRE

SATURDAY 29TH FEBRUARY
10AM TO 12PM

WEDNESDAY 4TH MARCH
5.30-7.30PM

- LEARN ABOUT THE GAME
- LEARN SOME SKILLS
- MEET OTHER MEN INTERESTED IN NETBALL
- LEARN ABOUT YOUR PLAYING OPTIONS

REGISTER ONLINE
OR TURN UP ON THE DAY :
WWW.NETBALLHAMILTON.ORG.NZ

Learn to play a woodwind instrument!

Flute, clarinet, sax, recorder, theory & ear test tuition is available from a friendly, experienced and qualified teacher in my home studio in Pukete. All enquiries from children and adults are welcome. Contact cwallace@orcon.net.nz or phone Catherine on 021 101 1447



YOUNG ENGINEERS

e2 Young Engineers -bricks challenge and Gali-Lego are exciting programmes that will boost a student's mind in creative thinking and problem solving. Students will explore basic principles of Science, Technology, Engineering and Maths and get a practical experience building motorised Lego models. It's fun, it's challenging, and it'll help them prepare for other educational pathways in science, physics or engineering! Available in Rototuna. Enrol now as spaces are limited.

For more information or to enrol please go to our website www.squiggle.org.nz or contact Katrina on 027 909 3903.

Friday 21 February 4pm - 7pm

Bring the family, pack a picnic and enjoy a summer afternoon with your neighbours.

There will be:

- Food stalls and entertainment
- Sports demos with a chance to have a play
- Face painting for the kids
- Pump track to try, bring your own wheels and safety gear
- Games and fun to be had by all

Being a new park, there's not a lot of shade – so remember to slip, slop, slap.

We look forward to seeing you there!

Be in to **WIN one of five Prezzy cards worth \$100** by entering your ideas for the Rototuna village design. Visit hamilton.govt.nz/Village

NZMGF PRESENTS NZ MINI GOLF WEEK 2020

The biggest week of competitive Mini Golf in NZ

AT PRODRIVE HAMILTON • 3rd - 7th March

	DATE	CATEGORY	ROUNDS	ENTRY
2020 OCEANIA MINI GOLF CHAMPIONSHIP	Tuesday 3rd & Wednesday 4th	Men & Women	8	\$50
	Wednesday 4th	Youth	2	\$15
	Thursday 5th	Individual knock out		\$20
2020 NZ MINI GOLF OPEN	Friday 6th	Pro Division	6	\$50
	Saturday 7th	Amateur Men	3	\$30
	Saturday 7th	Amateur Women	3	\$30
	Saturday 7th	Youth	2	\$20
	Saturday 7th	Parent & Child (amateur)	2	

PRIZES TO BE WON - Podium Finishes, Most Holes-in-one's and spot prizes

FOR MORE INFO & TO REGISTER - WWW.NZMINIGOLF.COM

Rototuna My Place

What does Rototuna mean to you?

Send us your thoughts about what Rototuna means to you and have your ideas become part of the village story!

Every idea goes into the draw to **WIN one of five \$100 Prezzy® cards.**

How do I enter?
Check out Hamilton.govt.nz/village
OR visit the Hamilton City Council Facebook page

All ideas must be received by:
5pm, Friday 21 February, 2020
T&Cs apply

Hamilton CHILDREN'S DAY

Te raa o ngaa tamariki ki Kirikiriroa

Saturday 7 March 2020, 10:00am - 2:00pm
Garden Place | Waikato Museum

FREE EVENT

For more information, visit our social media:
 @HAMILTONCHILDRENSDAY

LIVE ENTERTAINMENT • COMPETITIONS & PRIZES • CHALK FEST • RIDES & INFLATABLES • DIY FACE PAINTING • BRING A PICNIC



Hi there, In the heart of Rototuna, the Council is creating a unique and vibrant community village - with the help of everyone who calls Rototuna "my place". We need ideas to make the village truly yours, and a place of belonging for everyone.

Competition time



Show us what Rototuna means to you. Send us a photo, video, illustration or story about what Rototuna means to you, your whanau and friends.

Your ideas will be used to inform our design team about the unique Rototuna story.

Your ideas might reflect:

- animals or plants unique to Rototuna
- the environment in Rototuna – light, landscape, smells, colours etc
- the things which make you smile – a reminder you are at home
- a special place or activity you love to talk about with friends and family who don't live in Rototuna
- what you want Rototuna to look like for future generations.

Ideas and contributions will be revealed when the village and facility designs are released mid-year. A selection will also form part of an exhibition when the village opens in 2022.

All ideas are welcome!

If you have...

PHOTOS OR VIDEOS

Check out the Hamilton City Council Facebook page and pop them in the comments on the Rototuna village post.

Or, email them to rototuna@hcc.govt.nz.

ILLUSTRATIONS OR STORIES Hand them in at the Central library, St Andrews library or Chartwell library.

Or, post them to:

Rototuna Village Team

Hamilton City Council

Private Bag 3010

Hamilton 3240

All ideas must be received by 5.00pm, Friday 21 February 2020.

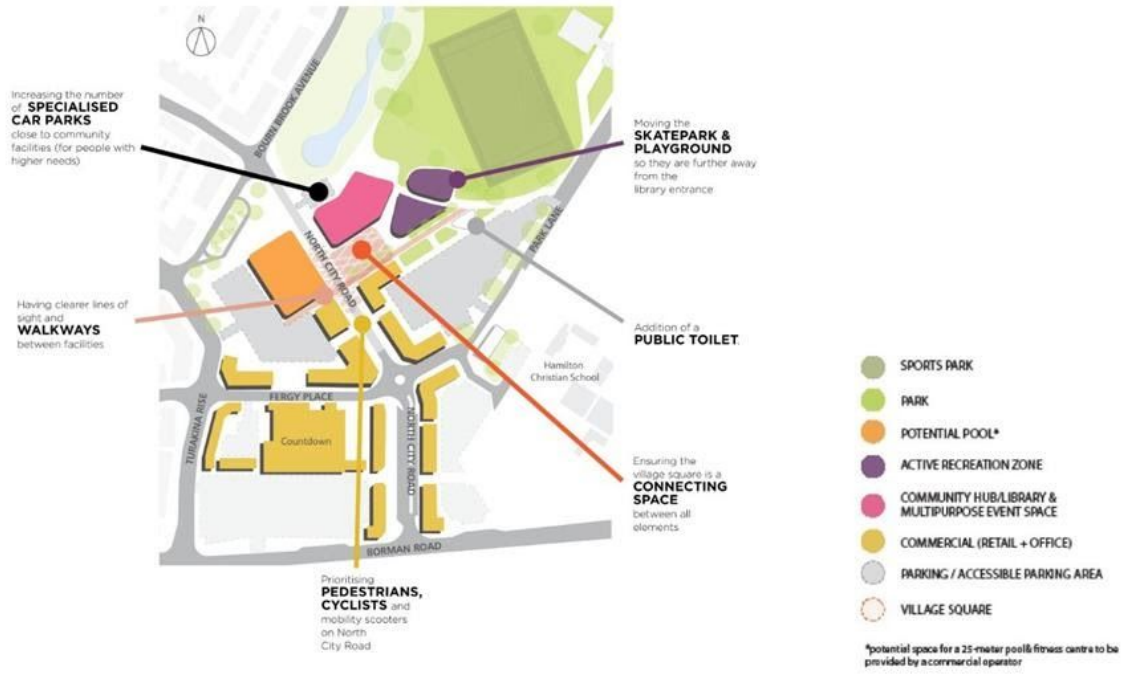
Come celebrate with us!



Come celebrate with us at the opening of Rototuna's new Korikori Park. Bring the family, pack a picnic and enjoy a summer afternoon with your neighbours. There will be food stalls and entertainment; sports demos; face painting; games and fun for all. Access the park by following Borman Rd round into Kimbrae Dr, lots of parking in the surrounding streets.

Let's recap

ROTOTUNA REVISITED



Late last year (2019) community feedback was sought on two design proposals (Rototuna A and Rototuna B).

Rototuna Project Manager Natasha Ryan said the feedback was "just fantastic" with great ideas to add or things that need to be addressed.

"It's exciting to see the community voice emerging from the design. There is a lot of detail to develop and the project team are now embedding the feedback into design briefs for the next stages of work".

The project team incorporated the feedback into a new design (that they have dubbed Rototuna Revisited).