

Kia Ora (Maori/NZ), Hello (English), Bula (Fijian), Welkom (South African), Huān yíng (Chinese-Mandarin), Ayubowan, Vanakkam (Sri Lankan), Namaste (India), Bem-vindos (Brazil), Marhaba (Arabic), Hallo (Dutch), Choum Reap Sour (Cambodia), Geiá sou (Greek), Mbote, Jambo (Congolese), Konnichiwa (Japanese), Hola (Spanish), Annyeonghaseyo (South Korea) Israel Shalom (Hebrew)

## \*\*\* MID TERM BREAK \*\*\* SCHOOL CLOSED

### Monday 21st August, 2023

Just a reminder that School is closed on **Monday 21st August, 2023**. This date was set last year and is to help with everyone's wellbeing at this time of the year. It is usual that we have increased student illness at this time of the year and in previous years we have noticed a reduction in absences due to illness after this break. We also have this break as there are no Public Holidays during this term.

### ILLNESS/INFECTION PREVENTION

This winter we are seeing a rise in seasonal colds, flu and other respiratory illnesses circulating within our communities, our early learning services, kura and schools.

To protect your family from the spread of respiratory infections this winter, and recognising COVID-19 is still circulating, it is important that you follow these infection prevention measures to support your family and also our school staff.

The more layers of protection you put in place – such as staying home if sick, washing your hands, vaccination, mask wearing and ventilation – the harder it will be for infection to spread.

**Te Whatu Ora**  
Health New Zealand

- **Children and visitors to our school should stay at home if they are unwell or have symptoms of COVID-19 or other respiratory illnesses.**
  - It is important that they have time to recover from illness and are fit for school. For accurate and reliable information on how to manage colds and flus visit [KidsHealth](#) or [Health Navigator](#). Call Healthline anytime on [0800 611116](tel:0800611116) for free health advice or information or your family General Practitioner (GP).
- If your child has been unwell with a respiratory illness other than COVID-19, they can return to school 24 hours after they have significantly improved and are behaving/eating normally. If they still have a runny nose or dry cough without any other symptoms such as a fever, vomiting or diarrhoea, then they are unlikely to be infectious and can be considered well enough to attend school.
- **Following vomiting or diarrhoea, a child must be symptom free for 48 hours before they can return to school.**
- In general, a Doctor's Medical Certificate or clearance does not have to be provided for a child to come back to school after being unwell.
- Healthy young children can have up to 8 to 12 colds or upper respiratory tract infections each year and these are a normal part of childhood.
- If a child becomes increasingly unwell and/or you are concerned about their health, call your GP or Healthline on 0800 611116 for medical advice. A child who is refusing to drink anything is likely to be very unwell.
- If an in-person appointment is required for your child, follow your GP's processes which may include having everyone who can practically and safely wear a mask to put one on.
- If you or a child you are caring for develops difficulty breathing, severe chest pain, fainting or becomes unconscious, call **111** immediately.
- If you have COVID-19 the NZ Government recommended advice is that you isolate for at least 5 days, even if you only have mild symptoms.

## TE TOTARA SCHOOL BOARD - STRATEGIC PLAN COMMUNITY CONSULTATION

The Strategic Plan is an agreement between Te Totara Primary School and the Ministry of Education that sets out the school's objectives and aims for the next two years. The current Strategic Plan (*previously entitled the School Charter*) covers 2020 – 2023, and we are now preparing for the 2024 – 2025 Plan.

Please click the below link to see a copy of the **current Strategic Plan**

<https://www.tetotara.school.nz/1/pages/6-current-charter-2020-2023>

This year, we are starting the process of renewing our Strategic Plan. We are consulting with our families, staff and students. As per our Te Tiriti o Waitangi partnership, we will be consulting with our Māori community and other stakeholders as well.

The next Strategic Plan (2024 – 2025) is aimed to address the school's vision, culture and our future. The document will outline the "big picture" goals, then an annual plan is written each year, which details the "how to" steps and actions that need to be taken. This keeps the school accountable and on track with their decision making.

The school has grown considerably since opening in 2008 from 58 students to a current roll of 760 students.

This survey will be used to develop an understanding of what we want to achieve and how we are going to achieve this.

The School Board needs the valued input of the Te Totara Community in order to assess the next direction that we should be focusing on as a school.

Our current Strategic Plan, which has been very successful, covers the above in four main areas:

- Grow Achievement for Learners
- Grow Whanau Community Involvement
- Grow Infrastructure for Students, Staff and Community
- Grow Wellbeing of Students, Staff and Community

Please click the blue ink to add your feedback: <https://forms.gle/eoyBt4Vrnd9Kba4j9>

The Board appreciates your valuable input into the Strategic Plan.

### **NO PARKING ALLOWED AT LEARNING LINKS, HECTOR DRIVE (Opposite the School)**

Learning Links, our wonderful preschool neighbour across the road has asked for our help as their families are having difficulties finding a park in their own carpark from 2.30pm - 3.30pm each day, as some of our families are parking there while they wait to pick up their Te Totara children.

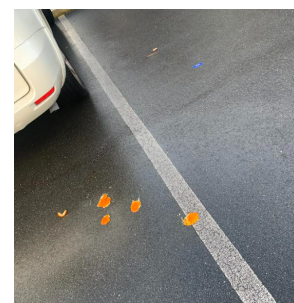


**NO PARKING**

**PLEASE DO NOT park in the Learning Links car park, unless you have a preschool child from Learning Links to pick up. The Learning links car park is for their families ONLY.**

We support the staff at Learning Links monitoring this, you will be asked to move if you are found to be parking in their premises without the above reason. Please be respectful of this request.

***Unfortunately, Learning Links staff have recently witnessed some unpleasant behaviour from some of our children/families who have been parking there.... littering, urinating in their car park and children running around unsupervised. This is not behavior I would expect from our students or our families, and I am very disappointed to be told about this. Our students are clearly identifiable by their school uniform. Please do not park in the Learning Links car park if you are waiting for your Te Totara child/ren.***



Thank you for your understanding and cooperation. We very much value the great relationships we have fostered with our neighbouring community organisations.

**Anne Fraser, Principal**

## OUT-OF-ZONE ENROLMENTS FOR 2024

Enrolment at the school is governed by an enrolment scheme, details of which are available on our school website by clicking the following link: [www.tetotara.school.nz](http://www.tetotara.school.nz)

There will be two 2023 out-of-zone enrolment periods:

The First enrolment period runs from 16th December 2023 – 5th July 2024

The Second enrolment period runs from 6th July 2023 – 19th December 2024

The Board has determined the following places are likely to be available to out-of-zone students from 2024 onwards. Enrolment period of **16th December, 2023 - 5th July, 2024**:

**22 places for New Entrants** (whose 5th Birthday falls within the above enrolment period)

**8 places for Year 1 students** (starting in Term 1, 2024)

**3 places for Year 2 students**

**10 places for Year 4 students**

The exact number of places will depend on the number of applications received from students who live within the school's home zone.

For students seeking enrolment within the above enrolment period, the deadline for receipt of out-of-zone applications is **3.00pm Friday 22nd September, 2023** and should be emailed to:

[receptionist@tetotara.school.nz](mailto:receptionist@tetotara.school.nz)

Parents of students who live within the home zone should also apply by this date to assist the school to plan appropriately for this year. Students who live in the home zone are entitled to enrol at the school.

Applications from out-of-zone students will be processed in the following order of priority:

- a) **First priority** must be given to students who have been accepted for enrolment in a special programme run by the school and approved by the Secretary of Education\*.  
\* This priority is not applicable at this school because the school does not run a special programme approved by the Ministry of Education
- b) **Second priority** must be given to any applicant who is the sibling of a current student of the school.
- c) **Third priority** must be given to any applicant who is the sibling of a former student of the school.
- d) **Fourth priority** must be given to any applicant who is a child of a former student of the school.
- e) **Fifth priority** must be given to any applicant who is either a child of an employee of the Board of the school, or a child of a member of the Board of the school.
- f) **Sixth priority** must be given to all other applicants.

If the number of out-of-zone applications exceeds the number of places available, students will be selected by ballot supervised by a Justice of the Peace, a Practising Lawyer or a Police Officer in accordance under Section 11G (1) of the Education Act 1989.

If a ballot for out-of-zone is required, it will be held on **Friday 6th October, 2023**. Parents will be informed of the outcome by **Wednesday 11th October, 2023**.

## IN-ZONE NEW ENTRANT ENROLMENTS

If you are in our school zone and have a preschooler coming to Te Totara in the future and you haven't officially enrolled your child at school yet, we would love to have an Enrolment Form - it would be much appreciated and certainly help with our future planning! Click on the link for an

[Enrolment Form](#)

## 2023 FEES, SPORTS REGISTRATIONS & DONATIONS PAID VIA KINDO

**Please Note: Aquatics will be charged after your child's class has had their lessons.**

Available to pay/register via KINDO now:

- **Marama Team Observatory Trip**  
Cut-off Date for registration is 3.00pm on Monday 21st August
- **Fairfield Cluster Cross Country (Selected Students ONLY)**  
Cut-off Date for registration is 3.00pm on Tuesday 22nd August

Kindo Questions? **Kindo Helpdesk on 0508 454636 (toll free)**





## SCHOOL LUNCH PROVIDERS - ezlunch

Available every day! Order by 9.00am

**NOTE: WE HAVE SPECIFIC DAYS FOR EACH LUNCH PROVIDER:**

Monday, Thursday & Friday	Tuesday & Wednesday

Click [here](#) to view the sample menus for both Subway and Feedzone (Fastlane Fitness)

All orders are placed through **KINDO** by [clicking here!](#) Simple and easy! You can order (or cancel) by 9.00am on the day of delivery or schedule in advance. Your lunch will be delivered to the school in time for lunch.



### Celebrate the Father figure in your life!

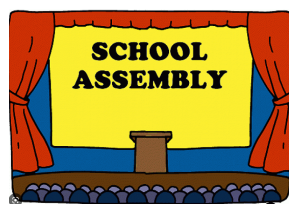
Whether it's a Dad, Uncle, Grandad or Poppa in your life, make them feel extra special this Father's Day with our ezlunch giveaway. Every lunch order gets you a chance to win one of THREE \$50 'Bunnings' vouchers.

Order [ezlunch](#) for delivery from Monday 21st August - Friday 1 September 2023 to be in the draw to WIN!

Three vouchers, three winners!

The winners will be drawn on Friday 1 September and notified by email/phone.

Go to [www.mykindo.co.nz](http://www.mykindo.co.nz) to start ordering.



### SCHOOL ASSEMBLY

This week's assembly will be held **in the Matariki Hall at 2.00pm on Friday, 18th August 2023.** This week students from **Matawhero, Ra & Marama Pods** will attend assembly and **Matawhero Rooms 4 & 5** will be sharing. Families from this classroom will be invited to attend via their classroom teacher.

### TE TOTARA SPORTS PLAYER OF THE DAY

If you are a Coach or Manager, please email the POD by **Wednesday 1pm** to [stephy@tetotara.school.nz](mailto:stephy@tetotara.school.nz)



#### Hockey

Blue Sticks	TBA
Lions	Ganeve Sandhu
Red Sticks	James Walker
Strikers	Luke Van Zyl
Tigers	Kayla Petzer
	Ruchika Minhas (last week)

#### Miniball

Ballers Luca Kaukau

#### Netball

Meteors	TBA
Ferns	TBA
Rockets	TBA
Invaders	TBA
Comets	TBA



## DATES COMING UP

Fri 18 August	Vision & Hearing Checks
Mon 21 August	Mid-Term Break - <b>SCHOOL CLOSED</b>
Tues 29 Aug	Fairfield Cluster Cross Country
Wed 30 Aug	PTA Meeting @ 7.30pm
Thurs 31 Aug	<i>Postponement Date: Fairfield Cluster Cross Country</i>
Thurs 31 Aug	Board Meeting at 6.30pm
Wed 6 & 7 Sept	Photolife Class & Individual School Photos
Thurs 7 Sept	School Art Exhibition 3:00pm - 6:30pm
Tues 19 Sept	Photolife Groups & Cluster Sports Photos
Thurs 21 Sept	Board Meeting at 6.30pm
Fri 22 Sept	END OF TERM 3, 2023
Mon 9 Oct	TERM 4 BEGINS

## TE TOTARA PTA NEWS

EMAIL: [pta@tetotara.school.nz](mailto:pta@tetotara.school.nz) [www.facebook.com/TTPTA](http://www.facebook.com/TTPTA)

Please 'like' our Facebook page to ensure you keep in the news loop: [www.facebook.com/TTPTA](http://www.facebook.com/TTPTA)



### KNOWLEDGE-A-THON

**The PTA's next fundraising initiative, a Knowledge-a-thon has started this week.**

Your children should have received their questions from their class teacher by now, so if you haven't seen these please ask your child to check their school bags.

#### What is a Knowledge-a-thon?

It is a chance for your child to increase their general knowledge in a number of areas. We ask that they seek and collect sponsorship for this event, as all funds raised will contribute to the building of stages 3 and 4 of the Confidence Course on the back field. Students have the next

4 weeks to learn the answers to the questions and will be tested during Week 9 of this term.

**How it works testing.** Depending on what year your child is in, will depend on how many questions they need to learn, and how many they will be tested on.

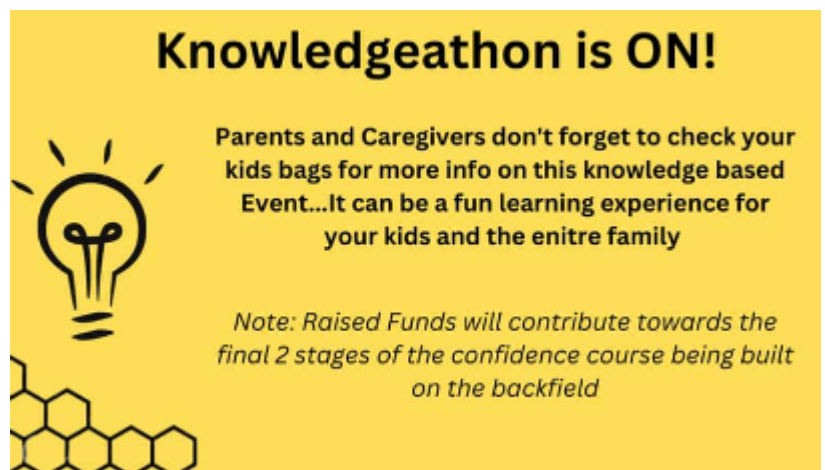
- *Students in Years 0&1 will have 10 questions to learn and will be tested on these 10 questions*
- *Students in Year 2 will have 20 questions to learn and will be tested on 10 of these questions*
- *Students in Year 3 will have 30 questions to learn and will be tested on 20 of these questions*
- *Students in Year 4 will have 40 questions to learn and will be tested on 20 of these questions*
- *Students in Year 5 will have 50 questions to learn and will be tested on 30 of these questions*
- *Students in Year 6 will have 60 questions to learn and will be tested on 30 of these questions*

#### Prizes, yes there are prizes!

Prizes for each pod! Return your sponsorship money and form on time for a chance to win.

**One special prize!** Awarded to the student who raises the highest overall sponsorship.

**Sponsors.** Children can ask their family and friends if they can sponsor them. A sponsor can nominate a set amount for each question correctly answered, or a set amount for the child completing the Knowledge-a-thon.



## ENTERTAINMENT MEMBERSHIP

An Entertainment Membership is an easy-to-use App packed full of incredible savings of up to 50% off and 2-for-1 offers, so you can save on takeaways, dining, shopping, gift cards, activities and more!

**Between 8:00pm 31/6/2023 and 1:59pm, 23/8/2023, save \$20.00 on 12 Month Multi City Memberships or Save \$50.00 on 24-month Multi-City Memberships.**



If you use the link below, 20% of every membership purchased is donated back to support Te Totara Primary School PTA  
<https://subscribe.entertainmentnz.com/fundraiser/15502m5>.

*We thank you for your continued support.*

## NEXT PTA MEETING

The next PTA Meeting will take place 30th August at 7:30pm in the Staff Lounge. All parents and caregivers of students of Te Totara Primary School are welcome to attend, so please book this date in your diary today! We would love to have you join us.

## UPCOMING EVENTS

Knowledge-a-thon – Currently running! Testing Week 9 of Term 3

Knowledge-a-thon – Sponsorship to be returned by Wednesday 18th October

Next PTA Meeting – Wednesday 30th August at 7.30pm

**Your PTA Committee:** *Kerri, Adelle, Navreet, Kerry, Garima and Kirsty*