

Kia Ora (Maori/NZ), Hello (English), Bula (Fijian), Welkom (South African), Huān yíng (Chinese-Mandarin), Ayubowan, Vanakkam (Sri Lankan), Namaste (India), Bem-vindos (Brazil), Marhaba (Arabic), Hallo (Dutch), Choum Reap Sour (Cambodia), Geiá sou (Greek), Mbote, Jambo (Congolese), Konnichiwa (Japanese), Hola (Spanish), Annyeonghaseyo (South Korea) Israel Shalom (Hebrew), Salām (Muslim)

Kia ora Te Totara Whānau,

Welcome to week 4. Our Milky Way campers returned from camp on Friday after a fantastic few days of adventure and fun. Well done to all of them.

As you may have heard on the news, all schools in New Zealand must have a cellphone rule in place from the beginning of Term 2. This week the Te Totara School Board are consulting with the community regarding this rule. Please see the section below for the wording and details.

Next week is Te Totara Transport Week. During the week Reuben the Road Safety Bear will be in school for our Yr 0-4 students, our Year 5 students will be focusing on scooter safety and the Year 6's will be learning about bike safety.

Our friends from the Hamilton City Council will be checking helmets, bikes and scooters and teaching our senior tamariki about being safe as they travel around the community.

- **Our Year 5's need to bring their scooter, shoes and helmet to school on Wednesday & Thursday.**

- **The Year 6's will need their bike, shoes and helmet at school from Monday to Thursday.**

Please make sure your scooter is named and both your bike or scooter is able to be locked when it is not in use at school.

Have a great week everyone.

Ngāa mihi

Jo Stewart - Acting Principal



TE TOTARA CELLPHONE RULE - COMMUNITY CONSULTATION

At Te Totara our approach towards cellphones is "**away for the day**", meaning the device should be **turned off, and handed in to the teacher to be locked away during the school day.**

We strongly recommend students **do not** bring communication devices to school with them. If a student does bring their cellphone for emergency contact, it **must** be handed to the teacher when they arrive at school to be locked away.

We understand that some parents like their children to have a phone to be in contact with them after school and these can be collected from the classroom teacher at the end of the day. If a parent or caregiver needs to contact their child urgently during the day, they should call the front office 07 853 0039

If students do make the decision to bring a cellphone onto the school grounds, they do so at their own risk. The school is not responsible for any loss or damage caused to any cellphone or communication device.

If we see or know of a student using a personal digital device (including smart watches) without permission during the school day, we will confiscate it. It will be placed in the office to be collected at the end of the day by a parent or guardian.

If you have any questions regarding this rule please contact Jo Stewart: jos@tetotara.school.nz

Highlights from School Camp MILKY WAY



DID YOU KNOW?

Did you know that Te Totara has its own Karakia that is used each day in our classrooms at the beginning of the day? A Karakia is a cultural act that is used to open and close meetings, or in our case to start and finish the day. We have 3 Karakia, one for the Junior (Years 0-2), Middle (Years 3 & 4) and Senior (Years 5 & 6) areas of the school. Our Te Totara STARS and our Motto of Growing and Learning Together form the basis of these. The Karakia was developed by staff and was then approved by Ngati Wairere, our local iwi.

I will share each Karakia with you over the coming weeks in the newsletter. Today I'm sharing the Middle School Karakia.

Middle School - Years 3&4

Greetings to all

We are Te Totara STARS

We are kind

We are respectful

We care for our environment

We are growing and learning together

Tēnā tatou katoa

Ko mātou te kahui Whetū o Te Totara

He ope manaaki

He ope aroha

He ope manaakitia te taiao

Ka tipu, ka ako tatou i a tatou

FAMILY HOLIDAYS TAKEN DURING TERM TIME

We are seeing an increase in families wishing to take their children out of school for a family holiday during term time. A specific "G" Attendance Code was introduced by the Ministry of Education (MOE) to keep track of these "unjustified" absences.

"G" Code Definition as per the MOE: *When a student is on a New Zealand or overseas holiday during the school term, the absence is unjustified. A parent's note does not provide justification.*

Our school would prefer family holidays to be taken outside of term time, we have approx. 12 weeks of school holidays available each year to do so. Events like a "Birthday" aren't considered a valid reason for your child/ren being away from school either.

We do appreciate there may be some circumstances beyond the control of families whereby children will need to be away during term time. In this instance simply notifying the teacher/school verbally that your family is going on holiday is not sufficient.

Our school procedure is to email the Principal with the dates your child/ren will be absent from school and the reason why.

Your email will be acknowledged and the Attendance Register will be coded as a "G" during their absence from school. We regularly monitor student absence and report to the Ministry of Education each term. Please consider the effect this has on your child's learning by taking a family holiday during the school term.

There is a Ministry of Education expectation of **90% and above** for regular attendance for each child in New Zealand schools.

Email address for our Acting Principal, Jo Stewart, is: principal@tetotara.school.nz

c.c. officeassistant@tetotara.school.nz (for the Attendance Register)

Does my child have to go to school every day?

Yes, your child must go to school every day. Under the Education Act 1989, parents and carers of school children up to 16 years old can be prosecuted if their child is away from school without a good reason.

Why do they need to go every day?

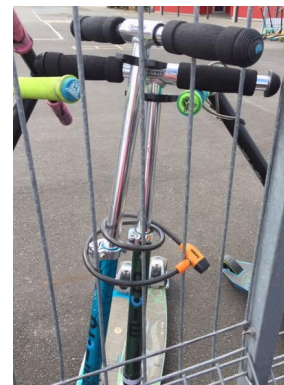
Going to school every day really is the key to getting the best out of school because:

- It sets up good habits for going to school right from day one
- Learning to read, write and do maths takes a lot of practice and is easier to master if your child goes to school regularly
- Each day is a chance to learn something new
- School offers your child regular, dedicated help to master the many skills they need
- It teaches your child life skills like commitment, being reliable, having a good work ethic and sticking with things when they get hard.

For more information on attendance at school, please click on the following link: Education.govt.nz [website](#)

LOCKING OF BIKES AND SCOOTERS

We do have security cameras scattered throughout the school however, our best advice is to **PLEASE LOCK YOUR CHILD'S BIKE OR SCOOTER.**



2024 FEES & DONATIONS PAID VIA KINDO

This online system allows you to pay for our school's fees (Mathletics/Mathseeds, Voluntary School Donation, Lost Library Book Costs etc) and is also the **ONLY** way to register/pay for your child for sports teams. Fees for 2024 have now been loaded to your child's KINDO account



Please Note: Aquatics will be charged after your child's class has had their lessons.



- **Cluster Swimming Trials - Years 4-6 only**

Your child **MUST** be able to confidently swim 25m in a competitive race to be able to register for this event. **Cut-off: 3.00pm Friday 23rd February, 2024**

- **Aquatics** (added to your KINDO account when your child's class is swimming)
- **Voluntary School Donation** (\$120.00 Eldest/only child at school / \$60.00 each sibling)

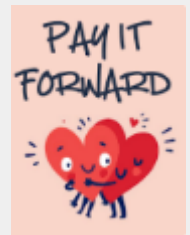
- **Mathletics/Mathseeds \$20.00**

- **2024 School Camp \$180.00 (Years 5&6 Students only)**

You are able to pay this in installments, just change the amount to pay on KINDO.

- **Pay it Forward - \$10.00, \$20.00 or \$50.00**

Currently, any "pay it forward" monies we receive will go towards the 2024 Year 5&6 School Camp fees for some of our families who may be struggling to cover the entire camp costs



Kindo Questions? Kindo Helpdesk on 0508 454636 (toll free)

If access is denied, it is most likely that our school does not have your current email address recorded on your child's file. Please do not hesitate to contact the School Office on (07) 853-0039 to amend.

Voluntary School Donation - what is it used for?

We want to provide our children with the full benefits of extensive resources, additional learning programmes and special opportunities that we can all be very proud of. This can only be achieved with your help and support.

School Donation funds are used to purchase additional sports gear, reading resources, library books, music, art equipment and helps subsidise our swimming programme.

The voluntary school donations are currently set at \$120.00 for the first or only child and \$60.00 for the second and subsequent children. There has been no increase in our school donation since 2016. School donations are voluntary, but we would be highly appreciative of any payments.

This donation is tax deductible and a portion can be claimed back from the IRD. The IR526 form is downloadable from the IRD website.

Mathletics or Mathseeds

Mathletics is a web-based programme that can be adapted to meet student's individual abilities. Mathletics provides instant feedback on each student's performance which helps to maintain a high level of student motivation. We have been impressed with how engaged the students are and how quickly they start to improve their mathematical skills and mental arithmetic.



It can be beneficial in the earlier years for an adult to sit with their child while on the programme. Although this is a great way for parents to engage with their child's Maths learning, we realise that this is not always possible for busy families. This programme has been so successful in previous years and we are excited to be able to provide you with a subscription to Mathletics for **\$20.00 per child** for a year (usually a one-year subscription costs \$99 per child). Subscribing to Mathletics will entitle students to 24-hour web access both at home and in school. A User ID and Password will be distributed to your child by the classroom teacher shortly after they start at Te Totara Primary School.

Aquatics

On our school website www.tetotara.school.nz you will find Swimming Pool information. The fees are currently \$60.00 per student per year.

The purpose of the swimming programme is to:

- Encourage students by making their learning to swim experience fun and rewarding.
- Provide a progressive curriculum which focuses on developing water confidence and then builds fundamental swimming skills to a level which confidence and competence is achieved.
- Motivate students through tangible rewards which illustrate their individual progress.
- Track all students' achievements through the National database.



We would like to thank our families for your continued support, it is very much appreciated.

SIBLING OUT-OF-ZONE ENROLMENTS FOR 2024 **Enrolment Period of 6th July, 2024 - 17th December, 2024**

The Board is looking to accommodate, if possible, younger siblings and children of staff in the 2024 school year, starting Term 3. To help determine this, we urgently need to have OUTZ Enrolment Forms into the School Office to help with this process. Please complete an Enrolment Form for each child, which is available online from our school website by clicking on the following link: www.tetotara.school.nz or by visiting the School Office.

The Board will look at the number of enrolments, the level of projected student growth and determine how many spaces for out-of-zone students are available for the upcoming enrolment period of **6th July 2024 - 17th December, 2024**. This will be completed early May, allowing for lots of time for families to know what is happening. Further information around the number of out-of-zone spaces to be released will be communicated via the school newsletter over the next few weeks.

Please return the completed OUTZ Enrolment Form, including the relevant documentation, to the School Office by Friday 1st March, 2024.

SCHOOL PARKING EXPECTATIONS

NO PARKING ON/OVER FOOTPATHS

Please.... No parking on or over the grass or footpaths at all. Several cars were seen parking over the footpaths at school recently, mainly on Hector Drive right in front of our school, blocking access for all pedestrians. This is a very serious health and safety risk so please show consideration for others when parking.



NO PARKING IN DISABLED PARKING SPACES

Just a reminder a mobility car park space is a specially designated car parking space for disabled people. You must have a mobility card to use a mobility park. Please DO NOT park in these car parks unless you have a mobility card.

PART-TIME SCHOOL CARETAKER VACANCY

We are looking for a reliable and energetic person to work as a Part-time Caretaker to support our current Caretaker with his duties.

Approximately 10-15 hours per week (*negotiable*) but must have the flexibility to cover leave or the odd day when our Caretaker is away from school.

The successful applicant will require a clean Police record, excellent health, flexibility and have excellent handyman skills to carry out repairs and maintenance around the school. It is important the school is maintained to a high standard.



Please contact Kylie Cocurullo by email: kyliec@tetotara.school.nz in the first instance for further information.

SCHOOL ASSEMBLY- MATARIKI HALL

This week's assembly will be held **in the Matariki Hall at 2.00pm on Friday 23rd February, 2024.** This week students from **Neptune & Milky Way Pods** will attend assembly. No classroom sharing this week as there will be Welcome Certificates for our new students to Te Totara. Families from this classroom will be invited to attend via their classroom teacher.



TE TOTARA SPORTS PLAYER OF THE DAY

If you are a Coach or Manager, please email the POD by **Wednesday 1.00pm** to stephy@tetotara.school.nz

Touch Rugby

Year 5&6 Stormers

Jason Mey & Ngawai Greenwood



DATES COMING UP

Fri 23 Feb	Ice Block Day
Wed 28 Feb	Routine Hearing Checks by WaiKids
Fri 8 March	Ice Block Day
Wed 20 March	Learning Plan Discussions - SCHOOL FINISHES AT 2.00PM
Thurs 21 March	Learning Plan Discussions - SCHOOL FINISHES AT 2.00PM
Wed 27 March	PTA Meeting @ 7.30pm
Fri 29 March	GOOD FRIDAY - SCHOOL CLOSED
Mon 1 April	EASTER MONDAY - SCHOOL CLOSED
Tues 2 April	EASTER TUESDAY - SCHOOL CLOSED
Fri 5 April	School Disco
Fri 12 April	END OF TERM 1, 2024
Mon 29 April	TERM 2 BEGINS
Tues 7 May	Kids Lit Quiz @ 6.30pm (<i>Selected Students only</i>)

TE TOTARA PTA NEWS

EMAIL: pta@tetotara.school.nz www.facebook.com/TTPTA

Please 'like' our Facebook page to ensure you keep in the news loop: www.facebook.com/TTPTA



ICE BLOCK DAY - TOMORROW

Our first Ice Block Day will be held tomorrow after Eating for Learning - Friday 23rd February, 2024.

We are selling lemonade ice blocks for \$2.00 each.

A HUGE thank you to the 3 parents who have offered to help out on the day, we appreciate you giving us your time.

If you are keen on helping out with our next ice block day on Friday 8th March, please email the PTA now on: pta@tetotara.school.nz It will only take up an hour of your day from 12.15pm and involves taking cash, counting it and supplying ice blocks to the students.

ICE BLOCK DAY



\$2 EACH

**LEMONADE ICE BLOCKS FOR SALE
AFTER EATING FOR LEARNING
OUTSIDE MATARIKI**

FRIDAY 23RD FEBRUARY

PTA MEETINGS...PAST & FUTURE

We had our first PTA meeting of the year last night and it was great to see 3 new faces come along. Thank you for attending and it was lovely to meet you all. If you couldn't make it to last night's meeting and would like to come to our next meeting, book this date and time into your calendar - **Wednesday 27th March at 7.30pm**. We meet in the Staff Lounge at school, turn right as you come through the main doors into Matariki.

Not sure what PTA stands for, what we do, or how you can help, please take a minute to have a look at the flyer below:

ENTERTAINMENT MEMBERSHIP

An Entertainment Membership is an easy-to-use App packed full of incredible savings of up to 50% off and 2-for-1 offers, so you can save on takeaways, dining, shopping, gift cards, activities and more.

Throughout the year various promotions are run, so if you are looking for a great deal keep an eye on this newsletter or click on the link below:

Currently, until **2:00pm, Thursday 29th February 2024** you will receive a **bonus Membership extension** based on your chosen Membership. (Please note, 3-month Memberships are excluded from this promotion.)

- If you purchase a **12 or 24 month Single City Membership**, you will **receive an extra two months added on to your chosen Membership**.
- If you purchase a **12 or 24 month Multi City Membership**, you will **receive an extra four months added on to your chosen Membership**.

By using the link below, 20% of every membership purchased is donated back to support the Te Totara Primary School PTA <https://subscribe.entertainmentnz.com/fundraiser/15502m5>. We thank you for your continued support.

UPCOMING EVENTS

Friday 23 rd March	Ice Block Day
Friday 8 th March	Ice Block Day
Wednesday 27 th March	PTA Meeting @ 7.30pm
Friday 5 th April	School Disco

Your PTA Committee: *Kerri, Adelle, Navreet, Kerry and Garima*



What is the PTA?

PTA stands for Parent Teacher Association.

It is a group of parents and families associated with Te Totara Primary School whose aim is to bring the school children and school community together, to fundraise and coordinate fun activities for the children and community.

What kind of skills are required to be part of the PTA?

The PTA requires a diverse range of skills.

Some examples include:

- Organisation and planning skills
- Communication or written skills
- Physical lifting or transporting purchases for events to the school.

All kinds of skills are welcome and needed to make the PTA successful. This helps share responsibilities and load across more people.

Want to see more of your friends?

Join the PTA with another friendly school parent and you will be able to catch up with them on a more regular basis all while organising fun and exciting fundraising activities.

Id like to join the PTA but I don't have time!

We hear this a lot from people.

The PTA isn't a huge commitment, approximately 8 x 1 hour meetings per year. A few extra hours will be required in the lead up to events.

In the last few years the PTA has...

- Held a Knowledge-a-thon and donated \$10,000 towards the Confidence Course on the back field.
- Contributed funds towards the senior camp to ensure all children are able to attend.
- Held a Spell-a-thon, and all the money raised was given to the school to purchase Lego Spike Education sets.
- Provided funds to turn the unused area of grass between the Staff Lounge and Orion block into a wonderful friendship garden.
- Provided funds for the playground by Matariki and once this was installed, we funded the shade sails.
- Contributed funds to our school so the artificial grass courts in the Galaxy could be covered, to give your child a dry place to play on wet days.

Interested in coming to our next meeting?

Please visit the Te Totara School PTA Facebook page for details

COMMUNITY NOTICES:

We are often asked to put Community Notices in our newsletter. Due to the large number of requests, we now have a "Community Notices" section on the notice board in the School Office, where you will find more information on the notices below. **Please note that this does not necessarily imply**

School endorsement of these notices.



grassroots TRUST | Velodrome
New Zealand's Home of Cycling

ENTRIES OPEN NOW!

3 RIDER TEAM SPRINT EVENT
OPEN TO ACCREDITED AND NON-ACCREDITED RIDERS YEARS 6, 7, 8, 9, 10
FIVE WEEKS OF TRAINING STARTING
9TH MARCH

FROM BEGINNER TO TRACK STAR!
FREE ENTRY TO CAMBRIDGE CYCLING
FESTIVAL SCHOOLS RACE

RACE DAY 13TH APRIL

FOR MORE INFO EMAIL
MYA.ANDERSON@VELODROME.NZ