

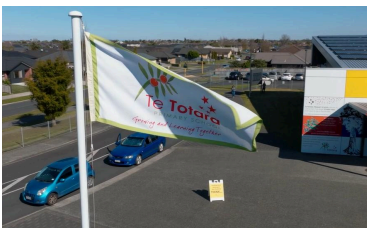
Kia Ora (Maori/NZ), Hello (English), Bula (Fijian), Welkom (South African), Huān yíng (Chinese-Mandarin), Ayubowan, Vanakkam (Sri Lankan), Namaste (India), Bem-vindos (Brazil), Marhaba (Arabic), Hallo (Dutch), Choum Reap Sour (Cambodia), Geiá sou (Greek), Mbote, Jambo (Congolese), Konnichiwa (Japanese), Hola (Spanish), Annyeonghaseyo (South Korea) Israel Shalom (Hebrew), Salām (Muslim)

Kia ora Te Totara Whānau,

We are now in week 6 of the term and our tamariki are settled and working hard in classes. We had a marvellous Transport Week last week with lots of road safety learning through Rueben the Road Safety Bear and the Hamilton City Council Scooter & Bike Safety Training. Please make sure you are modelling the correct use of the signal crossings to cross Hector Drive and Borman Road safely.

Our classes have begun a Social Sciences topic called **Te Totara Our Place, Our Story** which focuses on the story of Te Totara Primary School and the history of the area. At the end of 2023 we shared a video that was made in consultation with Ngaati Wairere and our Te Pae Here Kahui Ako about Te Totara and this area. It is a beautiful presentation about our story and place which still gives me goosebumps to watch. Please note this is on Vimeo. Click the below blue link to see this special taonga and learn about our place:

[Te Totara Our Place, Our Story](#)



Ngaa mihi

Jo Stewart - Acting Principal

DID YOU KNOW?

Plans for the building of a new school in Hamilton's north began in 2007. The school was named North City School at this stage. The photos below show what the Te Totara Primary School site looked like before building began. You can see the Hamilton Christian School in the background.



A MINISTRY OF EDUCATION GUIDE FOR PARENTS & CAREGIVERS - ATTENDANCE AT SCHOOL

Parents and caregiver expectations

Ākonga/students are legally required to attend school every day. Support is available for families of children who are struggling to attend.

- Parents play a big role in helping their child do well in school. You can do this by making sure your child goes to school every day and letting the school know each day if they're sick.
- Parents must make sure children are enrolled and attend school every day (*Education & Training Act 2020*)
- It is the parents/caregivers responsibility to contact the school if your child is absent (*will not be at school for a whole day or part of a day*). Our preferred method for absentee messages is through our School App.
- **Family holidays during term time or taking time off for extracurricular activities are not acceptable reasons for being absent.**
- Setting clear expectations with your child about why attending school every day is important.
- Missing one week of school each term means missing a whole year of learning by the time your child turns 16 years.
- The more time your child is away from school, the harder it is to catch up on missed learning, which is why we focus on reducing challenges that might prevent students from attending.



What are my legal responsibilities as a parent or caregiver?

- Regularly attending school helps students to get the most out of their education.
- Children must be enrolled in a school. If they leave a school you need to make sure you enrol them in the new school right away.
- You must let the school know if your child is going to be absent for a day, or intends to be absent for a portion of the school term for whatever reason, like a tangi or medical procedure.
- You are also responsible for letting the school know if your child is moving schools.

Tips for parents

- Talk to your tamariki about why school is important, be positive about it, and help them build good habits.
- Schools can help too. They should create a welcoming environment, have clear rules about attendance, and support local activities that promote going to school.
- We know that families sometimes have problems, and that can make it hard to focus on school. But there's help available.
- Schools and parents and caregivers should work in partnership to support tamariki regularly attend school. If your children are reluctant to go to school and you're having trouble, talk to your school.
- Prepare your children the night before school - help them pack their school bag.
- Set a good morning routine to get them to school on time and relaxed with everything they need.
- Be positive about school and set good habits from day one.

Getting help if your child is not attending regularly

We know there can be important reasons why children aren't coming to school, such as long-term illness, bullying or financial challenges for families. If your child is affected by any of these, talk to your school first.

Your school will work with you to remove barriers to attending. There are many kinds of support available that might help make it easier for students to come to school. Your school might also connect you with other agencies or alternative education pathways.

If you have more serious concerns, contact your local Ministry of Education Office.

WHAT DOES REGULAR ATTENDANCE AT SCHOOL MEAN?

Being at school everyday matters. The more knowledge ākonga (learners) get at school, the more choices they will have when they leave. Those missing school more frequently are likely to have bigger gaps in their learning which is why it is important to know how often individual students miss school. To do this, schools are required to provide attendance data to the Ministry of Education which is analysed each term, each student is allocated to one of four attendance categories:

- **Regular attendance: students with over 90% attendance**
(students missing fewer than five days of school in a standard 10 week term)
- **Irregular absence: students with more than 80% and up to 90% attendance**
(missing 5 – 9½ days of a standard term)
- **Moderate absence: students with more than 70% and up to 80% attendance**
(missing 10 – 14½ days of school in a standard term)
- **Chronic absence: students 70% attendance or less**
(missing 15 days or more of school in a standard term)

These categories tell us how often students are attending school each term, and how many are missing school frequently, but provide no information on why they do not attend.

There is a Ministry of Education expectation of **90% and above** for “regular attendance” for **each child** in New Zealand schools.

LEARNING PLAN DISCUSSION BOOKINGS

BOOKINGS OPEN NOW

School finishes at 2.00pm Wednesday 20th & Thursday 21st March, 2024

Learning Plan Discussions will take place for all students on the above dates, starting at 2.15pm. We have arranged **15 minute time slots** for the discussion, there will be a change over bell so that everyone is aware of timings. If you have more than one child, you might like to have a break between each interview. To ensure the smooth running of our Learning Plan Discussions, we would be grateful if all our parents/caregivers kept to the timetable. There will be an opportunity to discuss your child's progress on:

Room 7 ONLY- Monday 18th & Tuesday 19th March starting at 3.15pm

Rooms 7 & 9 ONLY - Tuesday 19th & Wednesday 20th March starting at 3.15pm

ALL other Rooms - Wednesday 20th March & Thursday 21st March starting at 2.15pm

Monday 18th March, 2024 (Room 7 only)

3.15pm, 3.30pm, 3.45pm, 4.00pm, 4.15pm, 4.30pm, 4.45pm, 5.00pm, 5.15pm & 5.30pm

Tuesday 19th March, 2024 (Rooms 7 & 9 only)

3.15pm, 3.30pm, 3.45pm, 4.00pm, 4.15pm, 4.30pm, 4.45pm, 5.00pm, 5.15pm & 5.30pm

Wednesday 20th March, 2024 (ALL ROOMS - Except Room 7)

2.15pm, 2.30pm, 2.45pm, 3.00pm, 3.15pm, 3.30pm, 3.45pm, 4.00pm, 4.15pm, 4.30pm, 4.45pm, 5.00pm, 5.15pm & 5.30pm

Thursday 21st March, 2024 (ALL ROOMS - Except Rooms 7 & 9)

2.15pm, 2.30pm, 2.45pm, 3.00pm, 3.15pm, 3.30pm, 3.45pm, 4.00pm, 4.15pm, 4.30pm, 4.45pm *(teachers break between 5.00pm-5.30pm)* 5.30pm, 5.45pm, 6.00pm & 6.15pm

How do I book a time?

To make an appointment time for your child/ren, please use our online booking system

www.schoolinterviews.co.nz – our school code is **92rj5**

Bookings close on **Monday 18th March, 2024 @ 3.00pm**. Sorry, we will not be able to accept bookings after this date/time.

NOTE:

Your child will be bringing home a **Student Goal Setting Letter** soon to discuss with you. Please complete this with them and return it to their classroom teacher by Friday 15th March, 2024. We do expect that ALL families will attend the Learning Plan Discussions and that all children attend as well to be part of the discussion and decision making about their learning goals.

PLEASE NOTE:

School will finish at 2.00pm both Wednesday 20th & Thursday 21st March for ALL students. Students will need to be collected at 2.00pm - Thanks.

TE TOTARA SCHOOL BOARD

As part of our Te Totara School Charter regarding the objective of 'Growing Whanau and Community Engagement', the Board invites your feedback on our policies.

The Te Totara School Board, will be reviewing the policies below at our next Board Meeting on Thursday 21st March, 2024

- **Performance Management Policy**
- **Social Media Policy**
- **Stand downs, Suspensions and Exclusions Policy**

At the May Board meeting the Te Totara School Board will be reviewing these policies:

- **Staff Leave Policy & Procedure**
- **Search, Seizure and Surrender Policy**
- **Education Outside the Classroom Policy**
- **Student Behaviour Policy**
- **Presiding Member Role Description Policy**

NOTE: All of the Te Totara Primary School Policies and Procedures are available for your information on our school website under the "School Board" red quick link tab from the home page.



NETBALL & COACHING TRAINING

Year 3-6

There will be a bing bong notice for anyone interested in playing Netball for Terms 2 and 3. This will be done on Monday, Week 7 in the Matariki Hall. Anyone in **Year 3-6** is welcome to come along and get an interest letter. If you missed out on the meeting you can see Mrs Gardyne (19), Mr Turner (12) or Mrs Gillies (34) for your notice.

Parents/Caregivers

We are always on the lookout for Netball coaches. If you think you might be interested here are the dates for courses:



[futureFERNs Coaching Workshops Dates](#)

We recommend coaches attend one of the courses below, these courses are FREE and held at Hamilton City Netball Centre

Year 1-2:

Thursday 11th April 2024: 6pm-8pm

Saturday 4th May 2024: 9am-11am

Year 3-4:

Tuesday 9th April 2024: 6pm-8pm

Saturday 4th May 2024: 12pm-2pm

Year 5-6: Coaches and Umpires are encouraged to attend this level:

Wednesday 10th April 2024: 6pm-8pm

Saturday 4th May 2024: 3pm-5pm



To register, <https://netballhamilton.org.nz/futureferns/coaching-workshops> follow this link and click on the register button.

2024 FEES & DONATIONS PAID VIA KINDO

This online system allows you to pay for our school's fees (*Mathletics/Mathseeds, Voluntary School Donation, Lost Library Book Costs etc*) and is also the **ONLY** way to register/pay for your child for sports teams. Fees for 2024 have now been loaded to your child's KINDO account

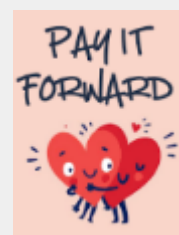


Please Note: Aquatics will be charged after your child's class has had their lessons.

- **Fairfield Cluster Swimming (Selected Students ONLY)**
 - Cut-off date for registrations is 3.00pm Thursday 7th March
- **Aquatics** (*added to your KINDO account when your child's class is swimming*)
- **Voluntary School Donation** (\$120.00 Eldest/only child at school / \$60.00 each sibling)
- **Mathletics/Mathseeds \$20.00**
- **2024 School Camp \$180.00 (Years 5&6 Students only)**

You are able to pay this in installments, just change the amount to pay on KINDO.
- **Pay it Forward - \$10.00, \$20.00 or \$50.00**

Currently, any "pay it forward" monies we receive will go towards the 2024 Year 5&6 School Camp fees for some of our families who may be struggling to cover the entire camp costs



Kindo Questions? Kindo Helpdesk on 0508 454636 (toll free)

If access is denied, it is most likely that our school does not have your current email address recorded on your child's file. Please do not hesitate to contact the School Office on (07) 853-0039 to amend.



LOST PROPERTY

We have collected quite a large pile of unclaimed school uniform with no names. These were laid out yesterday on the concrete outside our Earth Pod and a message was sent through on Seesaw to parents and caregivers inviting them to have a look through. These items are now back in the big yellow bin located outside the Earth building; there are LOTS of polar fleece jackets! Please check to see if any items belong to your family.

OUT-OF-ZONE ENROLMENTS FOR 2024

Enrolment at the school is governed by an enrolment scheme, details of which are available on our school website www.tetotara.school.nz

The Board has determined the following places are likely to be available to OUTZ students from Term 3, 2024 onwards. Enrolment period: **6th July 2024 - 17th December 2024**:

10 places for Year 0 students (whose 5th Birthday falls within the above enrolment period)

The exact number of places will depend on the number of applications received from students who live within the school's home zone.

For students seeking enrolment within the above enrolment period, the deadline for receipt of OUTZ applications is **3.00pm on Friday 12th April, 2024** and should be emailed to:

receptionist@tetotara.school.nz

Parents of students who live within the home zone should also apply by this date to assist the school to plan appropriately for next year. Students who live in the home zone are entitled to enrol at the school.

Applications from OUTZ students will be processed in accordance with the Ministry of Education Order of Priority. Please visit our school website www.tetotara.school.nz under "Out-of-Zone Enrolments" for further information. Click the red link: **[OUTZ Enrolment Form](#)**

If the number of OUTZ applications exceeds the number of places available, students will be selected by ballot supervised by a Justice of the Peace, a Practising Lawyer or a Police Officer in accordance with Section 11G (1) of the Education Act 1989.

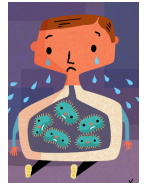
If a ballot for OUTZ is required, it will be held on **Friday 26th April, 2024**. Parents will be informed of the outcome by **Wednesday 1st May, 2024**.

SCHOOL ASSEMBLY- MATARIKI HALL

This week's assembly will be held **in the Matariki Hall at 2.00pm on Friday 8th March, 2024**. This week students from **Earth & Orion Pods** will attend the assembly. **Earth 35** will be sharing and families from this classroom will be invited to attend via their classroom teacher.



We are noticing a few tummy bugs and viruses going around at the moment. Just a reminder that if your child has had diarrhoea or vomiting they cannot return to school until it has been 48 HOURS since those last symptoms. These bugs can be highly contagious. Thanks for your understanding.



DATES COMING UP

Fri 8 March	Ice Block Day - \$2.00 each
Thurs 14 March	Fairfield Cluster Swimming <i>(Selected Students Only)</i>
Mon 18th March	Learning Plan Discussions - Room 7 only <i>(starting at 3.15pm)</i>
Tues 19th March	Learning Plan Discussions - Rooms 7 & 9 only <i>(starting at 3.15pm)</i>
Wed 20 March	Learning Plan Discussions - SCHOOL FINISHES AT 2.00PM
Thurs 21 March	Learning Plan Discussions - SCHOOL FINISHES AT 2.00PM
Wed 27 March	PTA Meeting @ 7.30pm
Fri 29 March	GOOD FRIDAY - SCHOOL CLOSED
Mon 1 April	EASTER MONDAY - SCHOOL CLOSED
Tues 2 April	EASTER TUESDAY - SCHOOL CLOSED
Fri 12 April	END OF TERM 1, 2024
Mon 29 April	TERM 2 BEGINS
Tues 7 May	Kids Lit Quiz @ 6.30pm <i>(Selected Students only)</i>
Fri 10 May	School Disco



Click the below blue link to see this special taonga and learn about our place:
[Te Totara Our Place, Our Story](#)

TE TOTARA PTA NEWS

EMAIL: pta@tetotara.school.nz www.facebook.com/TTPTA

Please 'like' our Facebook page to ensure you keep in the news loop: www.facebook.com/TTPTA



ICE BLOCK DAY

Our second ice block day of the year will be **tomorrow, Friday 8th March**. Please remember to handover some change to your kids to purchase some yummy, chilled iceblocks.

A HUGE thank you to parent helpers who are supporting us this time around. These initiatives are a success because of all your help.



NEXT PTA MEETING

Our next PTA meeting is **Wednesday 27th March at 7:30pm** so book this date and time into your calendar now. We meet in the Staff Lounge at school, turn right as you come through the main doors into Matariki.

Not sure what PTA stands for, what we do, or how you can help, please take a minute to have a look at the flyer.



What kind of skills are required to be part of the PTA?

The PTA requires a diverse range of skills.

Some examples include:

- Organisation and planning skills
- Communication or written skills
- Physical lifting or transporting purchases for events to the school.

All kinds of skills are welcome and needed to make the PTA successful. This helps share responsibilities and load across more people.

Want to see more of your friends?

Join the PTA with another friendly school parent and you will be able to catch up with them on a more regular basis all while organising fun and exciting fundraising activities.

Id like to join the PTA but I dont have time!

We hear this a lot from people. The PTA isn't a huge commitment, approximately 8 x 1 hour meetings per year. A few extra hours will be required in the lead up to events.

In the last few years the PTA has...

- Held a Knowledge-a-thon and donated \$10,000 towards the Confidence Course on the back field.
- Contributed funds towards the senior camp to ensure all children are able to attend.
- Held a Spell-a-thon, and all the money raised was given to the school to purchase Lego Spike Education sets.
- Provided funds to turn the unused area of grass between the Staff Lounge and Orion block into a wonderful friendship garden.
- Provided funds for the playground by Matariki and once this was installed, we funded the shade sails.
- Contributed funds to our school so the artificial grass courts in the Galaxy could be covered, to give your child a dry place to play on wet days.

Interested in coming to our next meeting?

Please visit the Te Totara School PTA Facebook page for details

ENTERTAINMENT MEMBERSHIP

When you purchase a **12 or 24 month Single City Membership** to The Entertainment App between **8:00pm NZDT, Friday 1st March 2024 and 1:59pm NZDT, Tuesday 2nd April** your new Membership purchase will be automatically **upgraded** to a Multi City Membership for free. An Entertainment Membership is an easy-to-use App packed full of incredible savings of up to 50% off and 2-for-1 offers, so you can save on takeaways, dining, shopping, gift cards, activities and more.

By using the link below, 20% of every membership purchased is donated back to support the Te Totara Primary School PTA <https://subscribe.entertainmentnz.com/fundraiser/15502m5>. We thank you for your continued support.

UPCOMING EVENTS

Friday 8 th March	Ice Block Day
Wednesday 27 th March	PTA Meeting @ 7.30pm
Friday 10 th May	School Disco (Please note - the date has changed from the previously published date due to unavoidable circumstances).

Your PTA Committee: *Kerri, Adelle, Navreet, Kerry and Garima*

COMMUNITY NOTICES:

We are often asked to put Community Notices in our newsletter. Due to the large number of requests, we now have a "Community Notices" section on the notice board in the School Office, where you will find more information on the notices below. **Please note that this does not necessarily imply School endorsement of these notices.**



MAGIC 2024 CENTRE PASS

Come join us for our
**FREE COMMUNITY
OPEN DAY!**

You will get the opportunity to meet our 2024 team, purchase some Magic merchandise and get involved in our unique skills sessions.

We will have a range of kids activities, food trucks, music and more making it the perfect day out for the whole family.

Saturday 16 March 2024 | 9.30am – 2.30pm
Globox Arena, Hamilton





**BOOST YOUR
LEARNING**

PRIVATE TUITION



PRIMARY TO NCEA

Learn to LOVE Learning

WWW.BOOSTYOURLEARNING.CO.NZ

**GIVE YOUR CHILD
THEIR PUBLIC VOICE!**



WHY CHOOSE US

- Weekly classes - After school
- Small groups
- Proven trainer - Winners NZ Speechmaker
- 35 years' experience with children
- Speech Correction

**KIDS DON'T MAKE GOOD LIFE DECISIONS –
MAKE THIS ONE FOR THEM!**



THE NUMBER 1 FEAR IS PUBLIC SPEAKING!

Your child can gain confidence for life
and public speaking skills with
Speak4Success.

Call us now 027 248 2888 roz@Speak4Success.co.nz