

Kia Ora (Maori/NZ), Hello (English), Bula (Fijian), Welkom (South African), Huān yíng (Chinese-Mandarin), Ayubowan, Vanakkam (Sri Lankan), Namaste (India), Bem-vindos (Brazil), Marhaba (Arabic), Hallo (Dutch), Choum Reap Sour (Cambodia), Geiá sou (Greek), Mbote, Jambo (Congolese), Konnichiwa (Japanese), Hola (Spanish), Annyeonghaseyo (South Korea) Israel Shalom (Hebrew), Salām (Muslim)

A REMINDER: School finishes at 2.00pm today, Thursday 21st March, for Learning Plan Discussions. Students will need to be collected at 2.00pm

Kia ora Te Totara Whānau,

It was wonderful to see all our families coming into school for our Learning Plan Discussions yesterday afternoon. We have another evening of discussions starting today at 2.15pm. These important discussions are a great way for parents and caregivers to connect with their child's learning and teacher. During the 15 minute discussion, goals are set by the child, teacher and parents in Reading, Writing, Maths and one goal that focuses on Te Totara STARS development.

Thank you all for taking the time to sit down with your child and their teacher to discuss their learning development and set goals for the first part of the year.

Ngaa mihi

Jo Stewart - Acting Principal

DID YOU KNOW?

The first road to get to the Te Totara School was made of dirt and mud. It was not the nice smooth Hector Drive we have today. The school site was surrounded by dairy farms and lots of cows. The Administration block, Marama and Milky Way were the first blocks to be built at Te Totara. Can you see the big hill behind the cars? This is where Summerset Village is today.





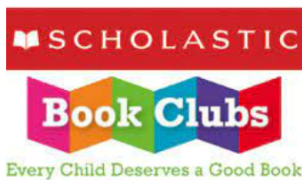
BIKING AND SCOOTERING TO SCHOOL

SAFETY HELMETS MUST BE WORN!

Helmets provide the best protection against head and brain injury, whether your child is riding a bike or scooter. Please ensure your child is wearing a properly fitted helmet before leaving for school in the morning. It could save their life!



We also highly recommend students **LOCKING** up their scooters and bikes on our school grounds.



SCHOLASTIC BOOK ORDER - ISSUE NO. 2

This week your child was given a Scholastic Book Club catalogue. Orders close at **9.15am tomorrow - Friday 22nd March, 2024.**

Please Note: We DO NOT ACCEPT CASH at all. This means you will have three options to order your scholastic books:

1. **Through the Scholastic Book Club website - scholastic.co.nz/LOOP**
2. **Through the Scholastic LOOP app**
3. **In person using EFTPOS at the school office.**

Please note: If we receive any orders with cash from students, we will return them home with the student



LATEST TT TV EPISODE OUT NOW! Starring Ra 32, Ra 33 and Milky Way 18

You can find the link on our website or for the latest episode click here [TT TV March 2024](#)



SCHOOL FEES FOR YOUR CHILD/REN ARE NOW LOADED ON KINDO

Invoices for payment were emailed to families earlier this week.

Please note that your eldest/only child's school donation of \$120.00 for the year has been loaded on KINDO as follows (2x \$60.00 = \$120.00):



2024 Voluntary School Donation	\$60.00	Paid \$0.00	Outstanding \$60.00	\$ 60.00	<input type="radio"/>
2024 Voluntary School Donation (Eldest Child \$120.00 per year)	\$60.00	Paid \$0.00	Outstanding \$60.00	\$ 60.00	<input type="radio"/>

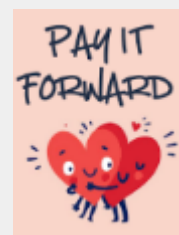
2024 FEES & DONATIONS PAID VIA KINDO

This online system allows you to pay for our school's fees (Mathletics/Mathseeds, Voluntary School Donation, Lost Library Book Costs etc) and is also the **ONLY** way to register/pay for your child for sports teams. Fees for 2024 have now been loaded to your child's KINDO account



Please Note: Aquatics will be charged after your child's class has had their lessons.

- **Netball - Years 4-6 Only (Terms 2&3)**
Cut-off date is 3.00pm on Thursday 28th March
\$59.00 for Years 3&4 and \$66.00 for Years 5&6
- **Hockey - Years 1-6 (Terms 2&3)**
Cut-off date is 3.00pm on Thursday 28th March
\$56.00 for Years 1&2 and \$60.00 for Years 3-6
- **Aquatics** (added to your KINDO account when your child's class is swimming)
- **Voluntary School Donation** (\$120.00 Eldest/only child at school / \$60.00 each sibling)
- **Mathletics/Mathseeds \$20.00**
- **2024 School Camp \$180.00 (Years 5&6 Students only)**
You are able to pay this in installments, just change the amount to pay on KINDO.
- **Pay it Forward - \$10.00, \$20.00 or \$50.00**
Currently, any "pay it forward" monies we receive will go towards the 2024 Year 5&6 School Camp fees for some of our families who may be struggling to cover the entire camp costs



Kindo Questions? Kindo Helpdesk on 0508 454636 (toll free)

If access is denied, it is most likely that our school does not have your current email address recorded on your child's file. Please do not hesitate to contact the School Office on (07) 853-0039 to amend.

TE TOTARA SCHOOL BOARD

As part of our Te Totara School Charter regarding the objective of 'Growing Whanau and Community Engagement', the Board invites your feedback on our policies.

The Te Totara School Board, will be reviewing the policies below at the May Board Meeting to be held on Thursday 30th May, 2024:

- **Staff Leave Policy & Procedure**
- **Search, Seizure and Surrender Policy**
- **Education Outside the Classroom Policy**
- **Student Behaviour Policy**
- **Presiding Member Role Description Policy**

NOTE: All of the Te Totara Primary School Policies and Procedures are available for your information on our school website under the "School Board" red quick link tab from the home page.

OUT-OF-ZONE ENROLMENTS FOR 2024

Enrolment at the school is governed by an enrolment scheme, details of which are available on our school website www.tetotara.school.nz

The Board has determined the following places are likely to be available to OUTZ students from Term 3, 2024 onwards. Enrolment period: **6th July 2024 - 17th December 2024**:

10 places for Year 0 students (*whose 5th Birthday falls within the above enrolment period*)

The exact number of places will depend on the number of applications received from students who live within the school's home zone.

For students seeking enrolment within the above enrolment period, the deadline for receipt of OUTZ applications is **3.00pm on Friday 12th April, 2024** and should be emailed to:

receptionist@tetotara.school.nz

Please visit our school website www.tetotara.school.nz under "Out-of-Zone Enrolments" for further information.

SCHOOL ASSEMBLY- MATARIKI HALL

This week's assembly will be held **in the Matariki Hall at 2.00pm on Friday 22nd March, 2024**. This week students from **Matawhero, Ra and Marama Pods** will attend the assembly. **Ra 30** will be sharing and families from this classroom will be invited to attend via their classroom teacher.



DATES COMING UP

Thurs 21 March	Learning Plan Discussions - SCHOOL FINISHES AT 2.00PM
Thurs 21 March	School Board Meeting 6.30pm
Wed 27 March	PTA Meeting @ 7.30pm
Fri 29 March	GOOD FRIDAY - SCHOOL CLOSED
Mon 1 April	EASTER MONDAY - SCHOOL CLOSED
Tues 2 April	EASTER TUESDAY - SCHOOL CLOSED
Fri 12 April	END OF TERM 1, 2024
Mon 29 April	TERM 2 BEGINS
Tues 7 May	Kids Lit Quiz @ 6.30pm (<i>Selected Students only</i>)
Fri 10 May	School Disco
Fri 17 May	Pink Shirt Day - Mufti Day
Thurs 30 May	School Board Meeting @ 6.30pm

TE TOTARA PTA NEWS

EMAIL: pta@tetotara.school.nz www.facebook.com/TTPTA

Please 'like' our Facebook page to ensure you keep in the news loop: www.facebook.com/TTPTA



NEXT PTA MEETING

Our next PTA meeting is **Wednesday 27th March at 7:30pm** so book this date and time into your calendar now. We meet in the Staff Lounge at school, turn right as you come through the main doors into Matariki.

ENTERTAINMENT MEMBERSHIP

When you purchase a **12 or 24 month Single City Membership** to The Entertainment App between **8:00pm NZDT, Friday 1st March and 1.59pm NZDT, Tuesday 2nd April, 2024** your new Membership purchase will be automatically **upgraded** to a Multi City Membership for free. Multi City Membership unlocks access to thousands of offers in 20 cities across New Zealand and Australia.

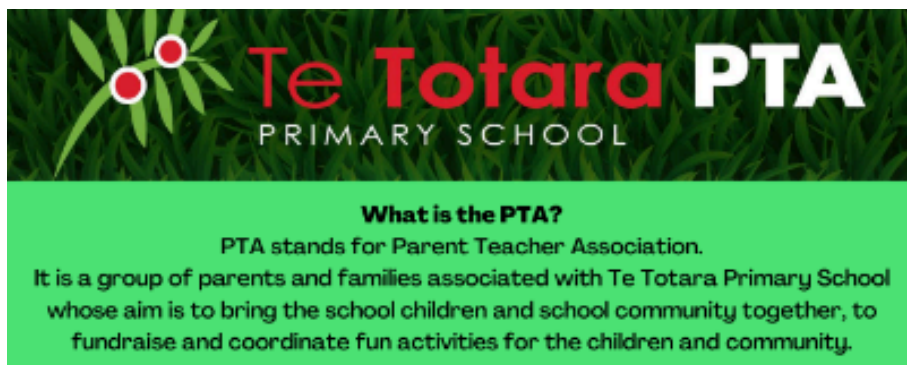
By using the link below, 20% of every membership purchased is donated back to support the Te Totara Primary School PTA <https://subscribe.entertainmentnz.com/fundraiser/15502m5>. We thank you for your continued support.

UPCOMING EVENTS

Wednesday 27th March
Friday 10th May

PTA Meeting @ 7.30pm
School Disco (**Please note - the date has changed from the previously published date due to unavoidable circumstances**).

Your PTA Committee: *Kerri, Adelle, Navreet, Kerry and Garima*



What is the PTA?

PTA stands for Parent Teacher Association.

It is a group of parents and families associated with Te Totara Primary School whose aim is to bring the school children and school community together, to fundraise and coordinate fun activities for the children and community.

What kind of skills are required to be part of the PTA?

The PTA requires a diverse range of skills.

Some examples include:

- Organisation and planning skills
- Communication or written skills
- Physical lifting or transporting purchases for events to the school

All kinds of skills are welcome and needed to make the PTA successful. This helps share responsibilities and load across more people.

Want to see more of your friends?

Join the PTA with another friendly school parent and you will be able to catch up with them on a more regular basis all while organising fun and exciting fundraising activities.

I'd like to join the PTA but I don't have time!

We hear this a lot from people. The PTA isn't a huge commitment, approximately 8 x 1 hour meetings per year. A few extra hours will be required in the lead up to events.

In the last few years the PTA has...

- Held a Knowledge-a-thon and donated \$10,000 towards the Confidence Course on the back field.
- Contributed funds towards the senior camp to ensure all children are able to attend.
- Held a Spell-a-thon, and all the money raised was given to the school to purchase Lego Spike Education sets.
- Provided funds to turn the unused area of grass between the Staff Lounge and Orion block into a wonderful friendship garden.
- Provided funds for the playground by Matariki and once this was installed, we funded the shade sails.
- Contributed funds to our school so the artificial grass courts in the Galaxy could be covered, to give your child a dry place to play on wet days.

Interested in coming to our next meeting?

Please visit the Te Totara School PTA Facebook page for details

COMMUNITY NOTICES:

We are often asked to put Community Notices in our newsletter. Due to the large number of requests, we now have a "Community Notices" section on the notice board in the School Office, where you will find more information on the notices below. **Please note that this does not necessarily imply School endorsement of these notices.**



KELLY SPORTS

HOLIDAY PROGRAMME

Mon 15 April - Fri 26 April

Join us for a fun-filled School Holiday Programme including Dodgeball Blitz, lots of sports, awesome games **& MUCH MORE!**

Some activities may need to be swapped for other exciting ones! Go online to check out a full, up-to-date timetable for your venue.

OSCAR PROGRAMME SUBSIDIES AVAILABLE! *Conditions apply

BOOK ONLINE NOW AT

KELLYSPORTS.CO.NZ

YEAR 5-8 STUDENTS

MULTI-SPORT GIVE-IT-A-GO



\$20 PER DAY
CHOOSE 1, 2 OR 3 DAYS

Join the Waikato Sport organisation and give sport a go these holidays! Netball, Volleyball, Football, Touch, Rugby, Fencing, Softball, Ultimate Frisbee, Cricket and so much more including accessible trikes and games!

Day 1: Tuesday 16th April
Day 2: Wednesday 17th April
Day 3: Thursday 18th April
9am-3pm
Fraser High School, Hamilton



Register before Sunday 14th April at tinyurl.com/MultiSportHolidays



Join us for the Waikato Society of Potters

Big Day of Clay!

Saturday 13th of April
10AM to 2PM

Activities for all ages, fun for the whole family

Ward Park Arts Centre,
2 Seddon Rd,
Hamilton

Slippery Dip * Paint a Pot * Lucky Dip * Raku Firings
Make a pot on a Pottery Wheel * Hand Building * Bake Sale
Squish, Squash, Mish, Mash * Raffles * Pottery Sales
Free to attend and all activities are \$2 to \$5

Waikato Society of Potters
Ward Park Art Centre, 2 Seddon Rd, Hamilton
(corner of Ward St & Seddon Rd)
Ph. 07 838 1950 or email info@waikatopotters.co.nz



No pen needed

Everyone entering New Zealand needs to complete a New Zealand Traveller Declaration.

Scan the QR code to:
Complete your declaration online, or download the NZTD app (you can complete your declaration while you are offline).

For more information go to TravellerDeclaration.govt.nz



Te Kāwanatanga o Aotearoa
New Zealand Government

New Zealand Traveller Declaration | Whakapuakanga Tangata Haere ki Aotearoa

HALF MARATHON

2024

The CAPE EGMONT

Run - Walk - Team Events
 14th July - 8am
 Oxford Road Okato Taranaki
 Virtual event July 1 to July 31

ENTRIES OPEN NOW www.capeegmonthalf.com

AFFORDABLE

LEADERSHIP + FUN HOLIDAY COURSE

KIDS GIVEN RAVE REVIEWS!
 School Hols: 1-4 days
 Ages 10+ Gain Certificate

Gain Certificate - Workbook - Flexible times
No Homework - Friends join AWESOME FUN

CRUCIAL TOPICS
 Leadership **Handle bullies** **Manage Conflict** **Perseverance**
 Coping Challenges **Stress-Sports** **Rejection** **Making Friends**
 Chairing Meetings **Public Speaking + more**

Open: 8.15am - 5.15pm
 Course: 9.15am - 4.15pm Venue: tba

REGISTER NOW

Give your Child a Head start in Life!

'SUCCESS IS NOT A MATTER OF CHANCE - IT'S A MATTER OF CHOICE'

Speak4Success, Ring Roz 027 248 2888 roz@speak4success.co.nz