



Kia Ora (Maori/NZ), Hello (English), Bula (Fijian), Welkom (South African), Huān yíng (Chinese-Mandarin), Ayubowan, Vanakkam (Sri Lankan), Namaste (India), Bem-vindos (Brazil), Marhaba (Arabic), Hallo (Dutch), Choum Reap Sour (Cambodia), Geiá sou (Greek), Mbote, Jambo (Congolese), Konnichiwa (Japanese), Hola (Spanish), Annyeonghaseyo (South Korea) Israel Shalom (Hebrew), Salām (Muslim)

EASTER HOLIDAYS ** SCHOOL CLOSED**

FRIDAY 29TH MARCH,
MONDAY 1ST APRIL
& TUESDAY 2ND APRIL, 2024

We open again on Wednesday 3rd April as normal, school starts at 8.55am

Wishing you all a safe and happy Easter

Today is the last day of school before the Easter Holidays which starts tomorrow. We have had queries about why the School is closed on Tuesday 2nd April. The below wording is taken from the [Ministry of Education website](#) and may be of help:

Easter Tuesday

The Tuesday following Easter Monday is a school holiday (*but not a statutory holiday*), meaning schools must not be open.

The Terms and Holidays are usually set so that Easter occurs during the first term break and the Easter Tuesday school holiday goes unnoticed. However, in some years Easter falls much earlier than usual such as in 1997, 2005, 2008, 2013, 2016, 2021 and 2024.

To have the first 2-week break at Easter in those years would shorten the first term to only 8 or 9 weeks (*instead of around 12 weeks*). In turn, this would mean that at least 1 of the other 3 Terms would have to be longer.

The Minister aims to set 4 Terms of reasonably uniform length. This means that in years when Easter falls particularly early, all or some of the Easter break will be during the first term.

Mondayisation

The Public Holidays for ANZAC Day (25th April) and Waitangi Day (6th February) are Monday-ised. This means that when either of these dates fall on a Saturday or Sunday, the corresponding public holiday will be observed on the Monday immediately following.

Kia ora Te Totara Whānau,

Ngaa mihi

Jo Stewart - Acting Principal



DID YOU KNOW?

Te Totara School officially opened on 10 June 2008 with 58 students enrolled. The uniform was still to come so the children and families arrived in mufti and had to walk down the dirt track to get to school. The opening ceremony had the first day students cut a special Te Totara ribbon which they each got to keep. The teachers also got to cut a ribbon. Can you recognise anyone in the photos?



NO SCOOTERS OR BIKES TO BE RIDDEN WITHIN THE SCHOOL GROUNDS

A reminder to everyone to please get off your scooter/bike **before** entering our school grounds. There have been some near misses, both with adults and children, riding electric scooters, normal scooters and bikes through our school grounds. So..... we ask everyone to **please walk your scooter/bike inside our school grounds**. This rule is for everyone's safety. Also, safety helmets must also be worn at all times.



2024 FEES & DONATIONS PAID VIA KINDO

This online system allows you to pay for our school's fees (Mathletics/Mathseeds, Voluntary School Donation, Lost Library Book Costs etc) and is also the **ONLY** way to register/pay for your child for sports teams. Fees for 2024 have now been loaded to your child's KINDO account



Please Note: Aquatics will be charged after your child's class has had their lessons.

- **Netball - Years 4-6 Only (Terms 2&3)**

Cut-off date is 3.00pm on Thursday 28th March

\$59.00 for Years 3&4 and \$66.00 for Years 5&6

- **Hockey - Years 1-6 (Terms 2&3)**

Cut-off date is 3.00pm on Thursday 28th March

\$56.00 for Years 1&2 and \$60.00 for Years 3-6

- **Aquatics** (added to your KINDO account when your child's class is swimming)

- **Voluntary School Donation** (\$120.00 Eldest/only child at school / \$60.00 each sibling)

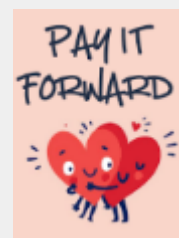
- **Mathletics/Mathseeds \$20.00**

- **2024 School Camp \$180.00 (Years 5&6 Students only)**

You are able to pay this in installments, just change the amount to pay on KINDO.

- **Pay it Forward - \$10.00, \$20.00 or \$50.00**

Currently, any "pay it forward" monies we receive will go towards the 2024 Year 5&6 School Camp fees for some of our families who may be struggling to cover the entire camp costs



Kindo Questions? Kindo Helpdesk on 0508 454636 (toll free) Monday to Friday 8.00am - 4.00pm
If access is denied, it is most likely that our school does not have your current email address recorded on your child's file. Please do not hesitate to contact the School Office on (07) 853-0039 to amend.

OUT-OF-ZONE ENROLMENTS FOR 2024

Enrolment at the school is governed by an enrolment scheme, details of which are available on our school website www.tetotara.school.nz

The Board has determined the following places are likely to be available to OUTZ students from Term 3, 2024 onwards. Enrolment period: **6th July 2024 - 17th December 2024:**

10 places for Year 0 students (whose 5th Birthday falls within the above enrolment period)

The exact number of places will depend on the number of applications received from students who live within the school's home zone.

For students seeking enrolment within the above enrolment period, the deadline for receipt of OUTZ applications is **3.00pm on Friday 12th April, 2024** and should be emailed to:

receptionist@tetotara.school.nz

Please visit our school website www.tetotara.school.nz under "Out-of-Zone Enrolments" for further information.

SCHOOL ASSEMBLY- MATARIKI HALL

This week's assembly will be held **in the Matariki Hall at 2.00pm on THURSDAY 28th March, 2024.** This week students from **Orion and Earth Pods** will attend the assembly. **Earth 38** will be sharing and families from this classroom will be invited to attend via their classroom teacher.



DATES COMING UP

Wed 27 March
Fri 29 March
Mon 1 April
Tue 2 April
Fri 12 April

PTA Meeting @ 7.30pm
GOOD FRIDAY - **SCHOOL CLOSED**
EASTER MONDAY - **SCHOOL CLOSED**
EASTER TUESDAY - **SCHOOL CLOSED**
END OF TERM 1, 2024

Mon 29 April
Tue 7 May
Fri 10 May
Fri 17 May
Thurs 30 May
Mon 3 June
Fri 28 June

TERM 2 BEGINS
Kids Lit Quiz @ 6.30pm (*Selected Students only*)
School Disco
Pink Shirt Day - Muffi Day
School Board Meeting @ 6.30pm
KINGS BIRTHDAY - **SCHOOL CLOSED**
MATARIKI

2024
Dates to
Remember

WIN A VOUCHER!

\$50

Order ezlunch for delivery
dates 25 March - 12 April 2024
to enter the draw!

TE TOTARA PTA NEWS

EMAIL: pta@tetotara.school.nz www.facebook.com/TTPTA

Please 'like' our Facebook page to ensure you keep in the news loop: www.facebook.com/TTPTA



ENTERTAINMENT MEMBERSHIP

An Entertainment Membership is an easy-to-use App packed full of incredible savings of up to 50% off and 2-for-1 offers, so you can save on takeaways, dining, shopping, gift cards, activities and more.

When you purchase a **12 or 24 month Single City Membership** to The Entertainment App between **8:00pm NZDT, Friday 1st March and 1.59pm NZDT, Tuesday 2nd April, 2024** your new Membership purchase will be automatically **upgraded** to a Multi City Membership for free.

By using the link below, 20% of every membership purchased is donated back to support the Te Totara Primary School PTA <https://subscribe.entertainmentnz.com/fundraiser/15502m5>. We thank you for your continued support.

FREE UPGRADE

| Membership Type | 12 Months | 24 Months |
|----------------------------|---------------------|---------------------|
| BUY SINGLE CITY MEMBERSHIP | \$69.99 | \$119.99 |
| GET UPGRADED TO MULTI CITY | \$119.99 | \$229.99 |

SAVE UP TO \$110*

- 👑 Unlock 20 cities across Australia and New Zealand for the price of one.
- 👑 Access thousand more offers.
- 👑 Donate 20% of your Membership fee to a meaningful cause.

The graphic features a hand holding a smartphone displaying the Entertainment app interface, set against a bright orange background with circular callouts for pricing and benefits.

UPCOMING EVENTS

Friday 10th May

School Disco *(Please note - the date has changed from the previously published date due to unavoidable circumstances).*

Your PTA Committee: *Kerri, Adelle, Navreet, Kerry and Garima*

COMMUNITY NOTICES:

We are often asked to put Community Notices in our newsletter. Due to the large number of requests, we now have a "Community Notices" section on the notice board in the School Office, where you will find more information on the notices below. **Please note that this does not necessarily imply School endorsement of these notices.**



KELLY SPORTS
HOLIDAY PROGRAMME
Mon 15 April - Fri 26 April

Join us for a fun-filled School Holiday Programme including Dodgeball Blitz, lots of sports, awesome games & **MUCH MORE!**
Some activities may need to be swapped for other exciting ones! Go online to check out a full, up-to-date timetable for your venue.

OSCAR PROGRAMME
SUBSIDIES AVAILABLE! Conditions apply BOOK ONLINE NOW AT
KELLYSPORTS.CO.NZ



Help shape the future Hamilton Kirikiriroa

We're focusing on:

- looking after what we've got
- delivering the essentials
- balancing the books.

 Share your voice on our plan for the next 10 years.

hamilton.govt.nz/futurehamilton
Feedback closes 21 April 2024

 Hamilton City Council
Te Kaitiaki o Kirikiriroa

HAMILTON CITY COUNCIL

Have your say on Council's Long-Term Plan

Hamilton City Council's Long-Term Plan outlines their plans for the next 10 years, and sets the rates increases for each of those years too. Costs are rising, and Council is seeking feedback on how they can reduce costs in future years, by potentially reducing the services they provide. Have your say on the future of Hamilton Kirikiriroa by making a submission at: hamilton.govt.nz/futurehamilton or picking up a submission form from any library. Consultation closes on 21 April, 2024.

We're also hosting our Your Neighbourhood event in Hamilton West, where our community can come along and learn more about what Council does, chat to us about the Long-Term Plan and make a submission.

Create, learn and experience!



PRACTICAL SKILLS

Woodworking, Woodturning,
Welding, Beekeeping, Barista, Book
Binding, Garden Design, Drones, Kitchen
Design, Sewing,

BUSINESS & COMPUTING

Accounting, Small Business, Word,
XERO, MS Excel, Computers for beginners

COOKING

Korean, Chinese, Vietnamese, Indian,
Cake Decorating

SOCIAL, HEALTH & WELLBEING

Note2Self, ADHD & Me, Death Literacy,
Speaking with Confidence

MĀTAURANGA MĀORI

Weaving - Korowai & Taaniko
Te Roopu Raranga (Flax)

CREATIVE ARTS

Metalsmithing,
Singing, Drama, Book, Publishing,
Photography, Dive into Paint, Guitar, Crochet

LANGUAGE

Te Reo, Spanish, NZSL,
IELTS, Chinese

**Offering local Adult Learning
opportunities through evening
and weekend classes**



Enrol Now @

www.fraser.school.nz/adult-education

comed@fraser.school.nz (07) 846 8624